

Accelerated Light Fading Test Results

Epson Stylus Pro 11880, Epson OEM UltraChrome K3™ with Vivid Magenta(ABW mode), Epson Hot Press Natural 330 gsm

Sample # AaI_20100122_SN007

140 Megalux-hours completed

Conservation Display Rating *	
Lower Exposure Limit (Megalux hours)	Upper Exposure limit (Megalux hours)
104	129

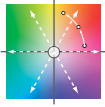
* Please read document **AaI_2009_0118_TA-01.pdf**, “An Overview of the AaI&A Conservation Display Ratings”, located on the Documents page of the AaI&A website for an explanation of the conservation display ratings.

Document #: AaI_20100122_SN007Lf.pdf Rev: June 13, 2013

Test Print Prepared by: AaI&A Member

Copyright 2013. This report has been prepared for the exclusive use of members of Aardenburg Imaging & Archives. Members may share this information with other members, friends, colleagues, and individual clients. It may also be distributed to groups for educational purposes (classes, lectures, educational seminars. etc). However, all contents including but not limited to Conservation Display Ratings may not be posted to web sites and may not be reproduced or distributed for corporate research, marketing, or other promotional purposes without written permission from Aardenburg Imaging & Archives.

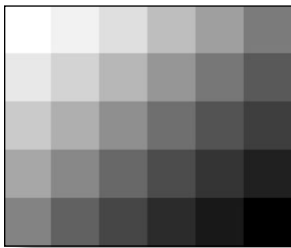
For more information please contact: info@aardenburg-imaging.com



About this Report

This report contains light fastness information about a single test print produced by a specific digital printing system. “System” refers to all hardware, software, and materials used to make the finished print. The hardware, software, material components, and printmaker’s skills contribute to the final image quality and image permanence. The tested sample is made with current or recently discontinued stocks of commercially available products unless otherwise stated. Each sample has been prepared by Aardenburg Imaging & Archives or one of its members in accordance with customary print making practices unless otherwise noted. The sample may also contain additional finishing materials such as overcoats and laminates which are also noted when used. Finally, the sample has been tested under standardized conditions that are defined on the Sample Description page (see page 2). AaI&A makes every effort to ensure but cannot guarantee that the samples are properly identified and documented and that test results are accurate. For this reason, AaI&A also strives to test independently produced sample replicates in order to increase sampling confidence and to provide information on process variability. Please compare the results in this report to replicate test samples when the data become available.

Understanding the Test Results



AaI_StandardB&Wset(v2).tif

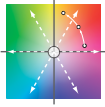
The magnitude and visual appearance of fading depends not only on the chosen printing system but the chosen image as well. In other words, different images are comprised of different colors, and the fading relationships between those colors dictate how the image will look as it fades. The sample print in this test report was made by printing the digital image shown on the left. This image is designed specifically for monochrome printing applications. It contains 30 neutral colors ranging from maximum white ($L^* = 100$, $a^* = 0$, $b^* = 0$) to maximum black ($L^* = 0$, $a^* = 0$, $b^* = 0$). Any hue and chroma observed in the “Original Print Colors” were achieved by the printmaker’s selection of media, RIP/driver settings, and choice of inks installed in the printer. The actual sample appearance reproduced in this report is digitally mastered from the colorimetric measurements of the test sample.

Information about the fading characteristics of the product is provided in three ways:``

1) ***You can visually assess the fading.*** The target images reproduced in this report are digitally reconstructed from the spectrally measured color data rather than scanning or otherwise reproducing the physical print by conventional techniques. This method ensures a colorimetrically accurate representation of the print appearance as the print fades. A calibrated monitor is recommended to experience the best possible reproduction of the test sample appearance. The side-by-side presentation of the target images simulates looking at the light-exposed print along side a perfect duplicate of the unexposed original print. The “Before/After” Layer mode takes advantage of Adobe Reader Layer technology. Toggle the “Before/After” layer on and off using the layers feature of Adobe Reader to directly switch between the light exposed print colors and the initial print colors for the image located on the right side of each page. Also, use Adobe Reader’s full screen mode to cycle through the pages and “animate” the fading.

2) ***I* Color and tonal accuracy scores are reported.*** This report includes I* metric scores that compare the color and tonal relationships of the light exposed samples to the color and tonal relationships existing in the original print prior to light exposure. Perfect I* scores of 100% can be approached when no significant fading occurs. Average scores above 90% generally indicate excellent retention of original quality, 80% good, 70% fair, etc., but your conclusions may vary depending on your image quality requirements. ***I* color*** rates the retained color accuracy (hue and chroma) while ***I* tone*** rates the retained tonal accuracy (lightness and contrast). The score is on a percentile scale where 100% is a perfect match between the comparison image (e.g., “after” light exposure) and the reference image (e.g., “before” any light exposure). 0% ***I* color*** means no color accuracy is left. 0% ***I* tone*** means essentially no tonality remains and all image information content is lost. Negative I* values have significance as well and contribute to the average I* score when they occur. Negative I* color values mean false color has occurred, for example, when a skin tone turns green or a neutral gray becomes distinctly colorful. Negative I* tone scores mean visual contrast between colors has become inverted (i.e., like the tonal relationships in a photographic film negative). Serious image quality problems must arise before false colors and/or tones appear. For more information on the I* metric, please refer to the AaI&A web site.

3) ***Color changes are also reported using the classic color difference model, ΔE .*** Note that ΔE values lose perceptual scaling significance when they become large (e.g., > 15). Also, the ΔE equation does not unambiguously measure changes in image contrast. This limitation is generally not a problem for paints and textiles, but can be a serious oversight when evaluating photographic images. It was a major reason behind the development of the I* metric.



Sample Description

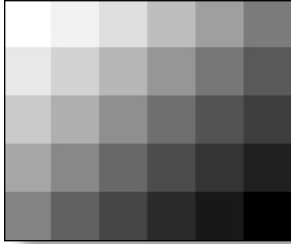
Printer: Epson Stylus Pro 11880

Ink: Epson OEM UltraChrome K3™ with Vivid Magenta(ABW mode)

Paper: Epson Hot Press Natural 330 gsm

Sample #: AaI_20100122_SN007

Test Print Prepared by: AaI&A member



AaI_StandardB&Wset(v2).tif

Test Image: AaI_StandardB&Wset(v2).tif

RIP/Driver settings: PS/CS4, Epson OEM driver, advanced black&white

Media Setting: Ultrasmooth FineArt, 1440 dpi, high speed off

Printed: January 22, 2010

Original print colors measured on: February 21, 2010

Test started on: February 22, 2010

Profile: n.a.

Rendering Intent: n.a.

Profile type: n.a.

Profile Creation Software: n.a.

Paper White Color (UV–included versus UV–excluded) and Maximum Printed Black						
Optical Brighteners present? no	L*		a*		b*	
	UV inc	UV exc	UV inc	UV exc	UV inc	UV exc
Maximum Paper White (no colorants printed)	96.4	96.5	0.6	0.6	3.3	3.4
(1) ΔL*, Δa*, Δb* respectively	0.1		0.0		0.1	
(1) Calculated differences, especially for Δb*, indicate the role and magnitude of fluorescence on original paper color						
Maximum Printed black (UV included)	L* = 15.2		a* = 0.6		b* = 1.1	

Light Source: Phillips Colortone F40T12/C50

Filter/Glazing: Sample framed under Glass*

Light Exposure Cycle: 8 hours on, 4 hours off, twice per 24 hours

Average Illuminance during “on” cycle: 10,716 Lux

Average Temperature: 23.7°C over full test duration, 25.4°C during light exposure

Average Relative humidity: 59.4%RH full test period, 59.8%RH during light exposure

CIELAB measurements: D50 2° observer, Xrite Gretag/Macbeth Spectrolino/Spectroscan

Replicates/Compare to:

No Replicates are available at this time.

See page 3 for additional comments.

Notes/Comments:

* The Phillips Colortone F40T12/C50 fluorescent light source and ordinary glass picture frame glazing yields UVA content and overall spectral power similar to natural 5000°K daylight entering a window and then striking a print that has been framed by **standard acrylic glazing** rather than ordinary glass. Other light sources and/or different glazing options may yield greater or lesser fade rates (generally, a 2-5x increase in fade rate for direct sunlight compared to UV-excluded sources at the same Lux level). The spectral quality of the light can also affect individual colors differently.

April 26, 2010 – This sample is one of sixteen samples which are part of a special study. The study grew out of an original sample submission request to test two new Epson papers, Hot Press Natural and Hot Press Bright White printed with the Colorbyte ImagePrint Rip. As it turned out, the requesting AaI&A member is a professional printmaker with two Epson wide format printers. One is an Epson Stylus Pro 9900 running the new Epson OEM UltraChrome HDR™ inks, and the other is an Epson Stylus Pro 11880 running Epson OEM UltraChrome K3™ with Vivid Magenta inks. With the very kind help of this member AaI&A has used this opportunity to create a unique paired comparison study. The study has been designed with print sample pairs all made on the same batch of papers under identical printing conditions. The sixteen sample group is also being tested in side-by-side configuration on the same light fade test unit in order to look for subtle differences between the two printer/ink sets, the two paper types, B&W versus color output, and lastly, any influence on light fading potentially caused by driver screening differences between the Imageprint output and the standard Epson OEM driver output. The sample #s in the study are:

AaI Sample #	Printer	Ink	Paper
AaI 20100122 SN001	Epson Stylus Pro 11880	Epson OEM UltraChrome K3™ with Vivid Magenta(B&W via imageprint)	Epson Hot Press Natural 330 gsm
AaI 20100122 SN003	Epson Stylus Pro 11880	Epson OEM UltraChrome K3™ with Vivid Magenta(via Imageprint)	Epson Hot Press Natural 330 gsm
AaI 20100122 SN005	Epson Stylus Pro 11880	Epson OEM UltraChrome K3™ with Vivid Magenta	Epson Hot Press Natural 330 gsm
AaI 20100122 SN007	Epson Stylus Pro 11880	Epson OEM UltraChrome K3™ with Vivid Magenta(ABW mode)	Epson Hot Press Natural 330 gsm
AaI 20100122 SN010	Epson Stylus Pro 11880	Epson OEM UltraChrome K3™ with Vivid Magenta(B&W via imageprint)	Epson Hot Press Bright White 330 gsm
AaI 20100122 SN011	Epson Stylus Pro 11880	Epson OEM UltraChrome K3™ with Vivid Magenta(via Imageprint)	Epson Hot Press Bright White 330 gsm
AaI 20100122 SN014	Epson Stylus Pro 11880	Epson OEM UltraChrome K3™ with Vivid Magenta	Epson Hot Press Bright White 330 gsm
AaI 20100122 SN016	Epson Stylus Pro 11880	Epson OEM UltraChrome K3™ with Vivid Magenta(ABW mode)	Epson Hot Press Bright White 330 gsm
AaI 20100123 SN001	Epson Stylus Pro 9900	Epson OEM UltraChrome HDR™ (B&W via imageprint)	Epson Hot Press Natural 330 gsm
AaI 20100123 SN003	Epson Stylus Pro 9900	Epson OEM UltraChrome HDR™ (via Imageprint)	Epson Hot Press Natural 330 gsm
AaI 20100123 SN005	Epson Stylus Pro 9900	Epson OEM UltraChrome HDR™	Epson Hot Press Natural 330 gsm
AaI 20100123 SN007	Epson Stylus Pro 9900	Epson OEM UltraChrome HDR™ (ABW mode)	Epson Hot Press Natural 330 gsm
AaI 20100123 SN010	Epson Stylus Pro 9900	Epson OEM UltraChrome HDR™ (B&W via imageprint)	Epson Hot Press Bright White 330 gsm
AaI 20100123 SN012	Epson Stylus Pro 9900	Epson OEM UltraChrome HDR™ (via Imageprint)	Epson Hot Press Bright White 330 gsm
AaI 20100123 SN014	Epson Stylus Pro 9900	Epson OEM UltraChrome HDR™	Epson Hot Press Bright White 330 gsm
AaI 20100123 SN016	Epson Stylus Pro 9900	Epson OEM UltraChrome HDR™ (ABW mode)	Epson Hot Press Bright White 330 gsm

Table to Convert Megalux-hours of Light Exposure to estimated “Years on Display”												
Indoor Light Levels for Print Display		Multiply Mlux-hrs by	Megalux-hours in test									
Light Exposure	Description		10	20	30	40	50	60	70	80	90	100
≤ 10 Lux 24 hours per day	Interior rooms, storage areas, or hallways without windows, illuminated sparingly by artificial lighting	11.42	114	228	342	457	571	685	799	913	1027	1142
50 Lux 12 hours per day	“Museum Standard” display condition	4.57	46	91	137	183	228	274	325	365	411	457
120 Lux 12 hours per day “Kodak Display Years” (1)	Average home illumination level for photos is ~ 60 lux. 90% of all displayed photos do not exceed 120 lux (1).	1.90	19	38	57	76	95	114	133	152	171	190
228 Lux 12 hours per day	Relatively bright home or office. Note the simple 1:1 relationship between “years on display” and Mlux-hr values at this condition.	1.00	10	20	30	40	50	60	70	80	90	100
450 Lux 12 hours per day “WIR Display Years” (2) Also equals 500 lux for 11.8 hours per day	A bright home or commercial office building illumination level is 200-500 lux. Also, good illumination for color critical viewing and color matching tasks begins at about 500 lux.	0.51	5	10	15	20	25	30	35	41	46	51
2000 Lux 12 hours per day	Commercial Gallery. Also, critical color evaluation standards call for 2000 lux and a D50 illumination source.	0.114	1.1	2.3	3.4	4.6	5.7	6.8	8.0	9.1	10.3	11.4
5000 Lux 12 hours per day	E.g., Sunlight through a window striking print at an angle.	0.046	0.5	0.9	1.4	1.8	2.3	2.7	3.2	3.7	4.1	4.6
10,000 Lux 12 hours per day	South-facing window in U.S.A. , e.g., storefront display with photos directly facing window.	0.023	0.2	0.5	0.7	0.9	1.1	1.4	1.6	1.8	2.1	2.3

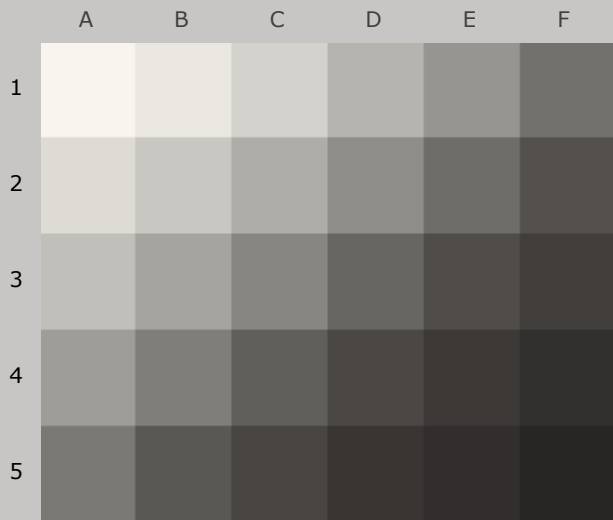
Light levels commonly encountered in the real world fluctuate widely throughout indoor print display environments and produce large variations in how long it takes for artwork to acquire light-induced damage. Use this table as a guide to estimate how many “years on display” (denoted in red text) it takes to accumulate the light exposure test dosage. Review the test results to decide which Megalux-hour dose has caused fading to your level of concern (e.g., just noticeable, easily noticeable, objectionable, etc.). Then choose the print display description that best represents how your print is likely to be displayed. You may want to obtain a lux meter and make some measurements in your own display environment!

Note that as the years of display time increase, light-induced fading can be eclipsed by other serious aging mechanisms such as fading and/or staining caused by heat, humidity, and air pollutants. Mould damage can also occur at high humidity. Even when colorants remain water fast, direct contact with liquids may result in physical deformation and staining of the substrate. Also, temperature and especially humidity cycling can cause physical cracks and/or flaking, etc. Handling damage such as scratching, abrasion, tears and creases, and catastrophic damage by smoke, fire, flood, etc., also degrade print quality over time. Thus, as illumination levels are reduced other forms of degradation take on greater proportion of risk and may appear in shorter time intervals.

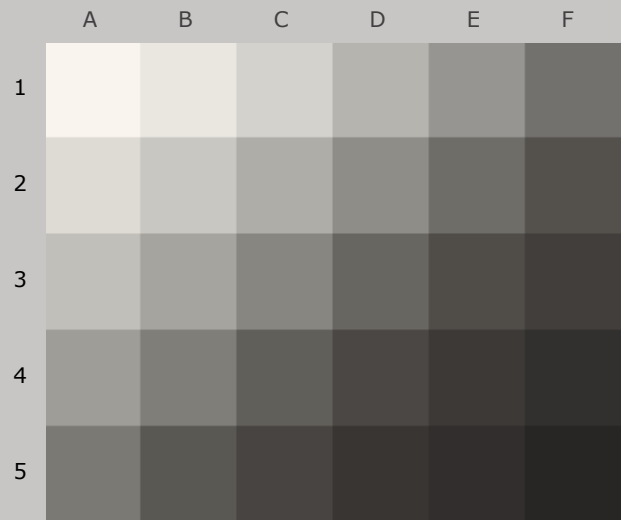
(1) Eastman Kodak has cited this exposure condition and 90% confidence limit as a rationale for estimating print fading times of traditional color photo materials in typical home display environments. For recent light fading claims regarding its line of pigment-based inkjet printers, Kodak has adopted the higher level of 450lux/12 hours per day which is also used by Wilhelm Imaging Research, Inc. (See below).

(2) Wilhelm Imaging Research (WIR) has standardized its light fastness ratings on 450 lux for 12 hours per day in order to estimate the years on display necessary to reach “noticeable” fading. This average light exposure condition, an assumed 75°F/60%RH temperature and humidity level, and WIR’s visually weighted densitometric endpoint criteria set V3.0 has become a de facto industry standard for most predictive light fading estimates in the absence of a published International Standards Organization (ISO) test standard.

100_{color}/100_{tone}



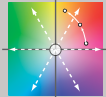
Original Print Colors
(measured before light exposure)



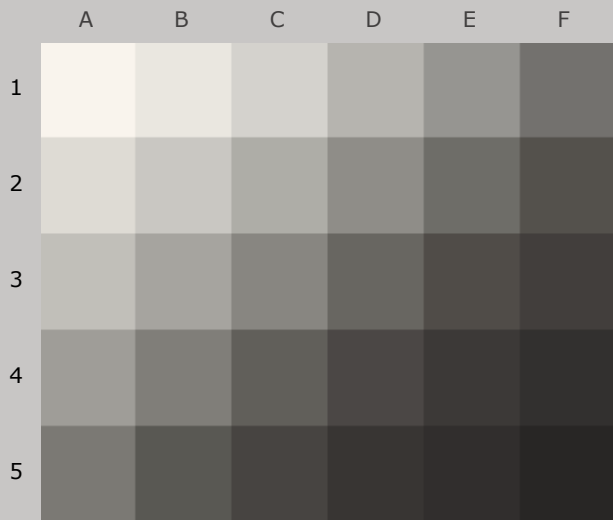
Colors at **Zero Megalux-hours** of Light Exposure
(same as original print colors)

*Epson Stylus Pro 11880, Epson OEM UltraChrome K3™ with Vivid Magenta(ABW mode),
Epson Hot Press Natural 330 gsm*

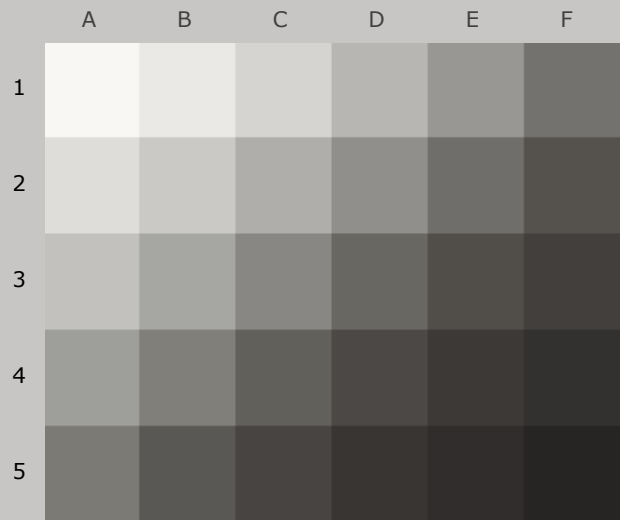
Original Print Colors as Measured and at Start of Test

Column/row	Color Patch	I*Color	ΔE	L*		a*		b*	
				Before	After	Before	After	Before	After
A1	Media White	100.0	0.0	96.3		0.6		3.6	
B1	Highlight L* = 96	100.0	0.0	91.9		0.5		3.8	
C1	Highlight L* = 89	100.0	0.0	84.4		0.2		3.4	
D1	Highlight L* = 78	100.0	0.0	73.4		-0.1		2.8	
E1	Midtone L* = 66	100.0	0.0	61.8		-0.2		2.4	
F1	Midtone L* = 52	100.0	0.0	47.7		0.0		2.5	
A2	Highlight L* = 92	100.0	0.0	87.6		0.3		3.6	
B2	Highlight L* = 85	100.0	0.0	80.3		0.1		3.2	
C2	Highlight L* = 75	100.0	0.0	70.4		-0.2		2.7	
D2	Midtone L* = 63	100.0	0.0	58.9		-0.2		2.6	
E2	Midtone L* = 50	100.0	0.0	46.0		0.1		2.6	
F2	Midtone L* = 38	100.0	0.0	34.6		0.6		2.7	
A3	Highlight L* = 82	100.0	0.0	77.4		-0.1		2.8	
B3	Midtone L* = 72	100.0	0.0	67.4		-0.3		2.7	
C3	Midtone L* = 60	100.0	0.0	56.0		-0.2		2.7	
D3	Midtone L* = 47	100.0	0.0	43.0		0.1		2.8	
E3	Midtone L* = 35	100.0	0.0	32.7		0.6		2.7	
F3	Shadow L* = 25	100.0	0.0	26.6		0.8		2.1	
A4	Midtone L* = 69	100.0	0.0	64.7		-0.3		2.6	
B4	Midtone L* = 57	100.0	0.0	52.9		-0.2		2.8	
C4	Midtone L* = 45	100.0	0.0	40.4		0.2		2.9	
D4	Midtone L* = 32	100.0	0.0	30.7		0.6		2.5	
E4	Shadow L* = 20	100.0	0.0	24.3		0.7		1.8	
F4	Shadow L* = 10	100.0	0.0	20.1		0.9		1.5	
A5	Midtone L* = 55	100.0	0.0	51.0		-0.2		2.8	
B5	Midtone L* = 41	100.0	0.0	37.2		0.4		2.9	
C5	Shadow L* = 29	100.0	0.0	28.9		0.7		2.1	
D5	Shadow L* = 15	100.0	0.0	22.3		0.8		1.8	
E5	Shadow L* = 5	100.0	0.0	19.0		0.8		1.3	
F5	Max Black	100.0	0.0	15.2		0.6		1.1	
Summary Results		I*Color	I*tone	ΔE	 AARDENBURG IMAGING & ARCHIVES				
Average Score for all patches		100	100	0.0					
Average Score for the Worst 10% (3 lowest scoring patches)		100	100	0.0					

98.1_{color} / 98.3_{tone}



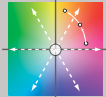
Original Print Colors
(measured before light exposure)



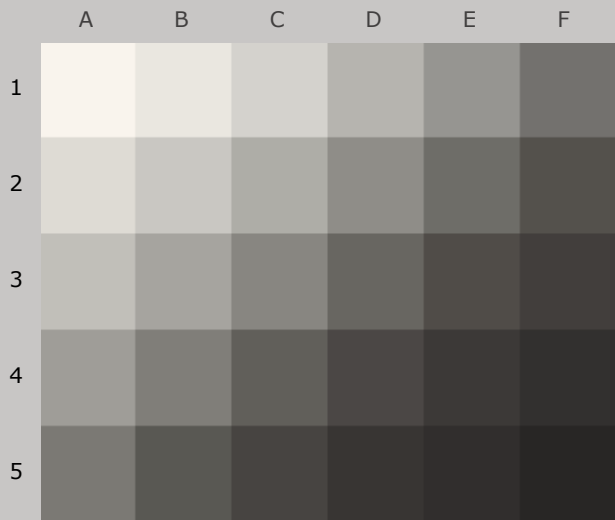
Colors after 10 Megalux-hours
light exposure

*Epson Stylus Pro 11880, Epson OEM UltraChrome K3™ with Vivid Magenta(ABW mode),
Epson Hot Press Natural 330 gsm*

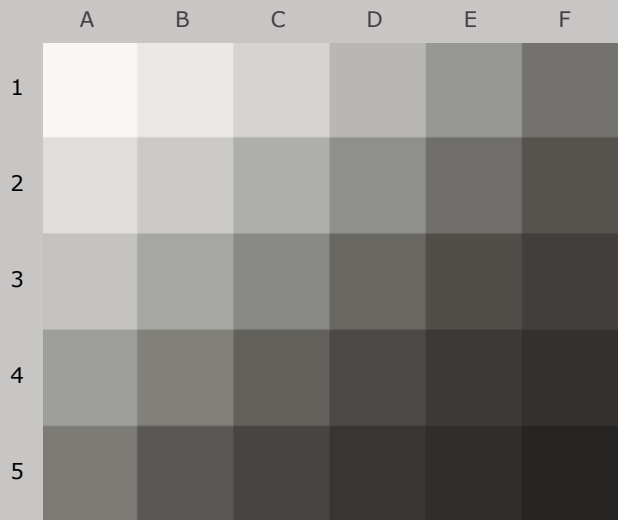
10 Mlux-hrs Light Exposure (i.e., after) Compared to Original Print Colors (i.e., before)

Column/row	Color Patch	I*Color	ΔE	L*		a*		b*	
				Before	After	Before	After	Before	After
A1	Media White	83.8	2.2	96.3	97.1	0.6	0.4	3.6	1.6
B1	Highlight L* = 96	87.3	1.9	91.9	92.6	0.5	0.3	3.8	2.1
C1	Highlight L* = 89	92.0	1.4	84.4	85.1	0.2	0.0	3.4	2.2
D1	Highlight L* = 78	98.2	0.9	73.4	74.1	-0.1	-0.3	2.8	2.1
E1	Midtone L* = 66	100.0	0.7	61.8	62.3	-0.2	-0.5	2.4	2.1
F1	Midtone L* = 52	100.0	0.5	47.7	48.2	0.0	-0.1	2.5	2.4
A2	Highlight L* = 92	90.3	1.6	87.6	88.3	0.3	0.0	3.6	2.2
B2	Highlight L* = 85	94.1	1.3	80.3	81.0	0.1	-0.2	3.2	2.1
C2	Highlight L* = 75	99.4	0.9	70.4	71.1	-0.2	-0.5	2.7	2.2
D2	Midtone L* = 63	100.0	0.7	58.9	59.5	-0.2	-0.4	2.6	2.4
E2	Midtone L* = 50	100.0	0.5	46.0	46.4	0.1	-0.1	2.6	2.5
F2	Midtone L* = 38	100.0	0.4	34.6	35.0	0.6	0.5	2.7	2.6
A3	Highlight L* = 82	96.9	1.0	77.4	78.1	-0.1	-0.3	2.8	2.0
B3	Midtone L* = 72	100.0	0.8	67.4	68.0	-0.3	-0.5	2.7	2.3
C3	Midtone L* = 60	100.0	0.7	56.0	56.6	-0.2	-0.4	2.7	2.5
D3	Midtone L* = 47	100.0	0.5	43.0	43.5	0.1	0.1	2.8	2.8
E3	Midtone L* = 35	100.0	0.3	32.7	33.0	0.6	0.6	2.7	2.7
F3	Shadow L* = 25	100.0	0.2	26.6	26.9	0.8	0.8	2.1	2.1
A4	Midtone L* = 69	100.0	0.8	64.7	65.4	-0.3	-0.5	2.6	2.2
B4	Midtone L* = 57	100.0	0.6	52.9	53.4	-0.2	-0.4	2.8	2.6
C4	Midtone L* = 45	100.0	0.4	40.4	40.8	0.2	0.1	2.9	2.8
D4	Midtone L* = 32	100.0	0.3	30.7	31.0	0.6	0.6	2.5	2.4
E4	Shadow L* = 20	100.0	0.1	24.3	24.4	0.7	0.7	1.8	1.8
F4	Shadow L* = 10	100.0	0.1	20.1	20.2	0.9	0.9	1.5	1.5
A5	Midtone L* = 55	100.0	0.6	51.0	51.5	-0.2	-0.3	2.8	2.6
B5	Midtone L* = 41	100.0	0.4	37.2	37.6	0.4	0.3	2.9	2.9
C5	Shadow L* = 29	100.0	0.2	28.9	29.1	0.7	0.7	2.1	2.2
D5	Shadow L* = 15	100.0	0.0	22.3	22.3	0.8	0.8	1.8	1.8
E5	Shadow L* = 5	100.0	0.1	19.0	19.0	0.8	0.8	1.3	1.3
F5	Max Black	100.0	0.2	15.2	15.1	0.6	0.6	1.1	1.0
Summary Results		I*Color	I*tone	ΔE	 AARDENBURG IMAGING & ARCHIVES				
Average Score for all patches		98.1	98.3	0.7					
Average Score for the Worst 10% (3 lowest scoring patches)		87.1	97.4	1.9					

97.6_{color} / 97.7_{tone}



Original Print Colors
(measured before light exposure)



Colors after 20 Megalux-hours
light exposure

*Epson Stylus Pro 11880, Epson OEM UltraChrome K3™ with Vivid Magenta(ABW mode),
Epson Hot Press Natural 330 gsm*

20 Mlux-hrs Light Exposure (i.e., after) Compared to Original Print Colors (i.e., before)

Column/row	Color Patch	I*Color	ΔE	L*		a*		b*	
				Before	After	Before	After	Before	After
A1	Media White	81.7	2.4	96.3	97.2	0.6	0.4	3.6	1.4
B1	Highlight L* = 96	85.4	2.1	91.9	92.7	0.5	0.2	3.8	1.9
C1	Highlight L* = 89	90.3	1.7	84.4	85.2	0.2	-0.1	3.4	2.1
D1	Highlight L* = 78	97.2	1.2	73.4	74.4	-0.1	-0.5	2.8	2.1
E1	Midtone L* = 66	100.0	1.0	61.8	62.7	-0.2	-0.6	2.4	2.1
F1	Midtone L* = 52	100.0	0.7	47.7	48.4	0.0	-0.2	2.5	2.4
A2	Highlight L* = 92	88.6	1.8	87.6	88.4	0.3	-0.1	3.6	2.1
B2	Highlight L* = 85	93.3	1.5	80.3	81.3	0.1	-0.3	3.2	2.1
C2	Highlight L* = 75	98.2	1.2	70.4	71.4	-0.2	-0.6	2.7	2.2
D2	Midtone L* = 63	100.0	1.0	58.9	59.8	-0.2	-0.6	2.6	2.4
E2	Midtone L* = 50	100.0	0.7	46.0	46.7	0.1	-0.1	2.6	2.5
F2	Midtone L* = 38	100.0	0.5	34.6	35.1	0.6	0.6	2.7	2.6
A3	Highlight L* = 82	96.0	1.2	77.4	78.3	-0.1	-0.4	2.8	2.0
B3	Midtone L* = 72	99.1	1.1	67.4	68.3	-0.3	-0.7	2.7	2.3
C3	Midtone L* = 60	100.0	0.9	56.0	56.8	-0.2	-0.5	2.7	2.4
D3	Midtone L* = 47	100.0	0.7	43.0	43.7	0.1	0.0	2.8	2.8
E3	Midtone L* = 35	100.0	0.5	32.7	33.1	0.6	0.6	2.7	2.7
F3	Shadow L* = 25	100.0	0.3	26.6	27.0	0.8	0.8	2.1	2.1
A4	Midtone L* = 69	99.2	1.1	64.7	65.7	-0.3	-0.7	2.6	2.2
B4	Midtone L* = 57	100.0	0.8	52.9	53.7	-0.2	-0.4	2.8	2.6
C4	Midtone L* = 45	100.0	0.6	40.4	41.0	0.2	0.1	2.9	2.8
D4	Midtone L* = 32	100.0	0.4	30.7	31.1	0.6	0.6	2.5	2.5
E4	Shadow L* = 20	100.0	0.1	24.3	24.4	0.7	0.8	1.8	1.8
F4	Shadow L* = 10	100.0	0.1	20.1	20.1	0.9	0.9	1.5	1.5
A5	Midtone L* = 55	100.0	0.7	51.0	51.7	-0.2	-0.3	2.8	2.6
B5	Midtone L* = 41	100.0	0.6	37.2	37.8	0.4	0.3	2.9	2.8
C5	Shadow L* = 29	100.0	0.3	28.9	29.2	0.7	0.7	2.1	2.1
D5	Shadow L* = 15	100.0	0.1	22.3	22.3	0.8	0.8	1.8	1.8
E5	Shadow L* = 5	100.0	0.1	19.0	18.9	0.8	0.8	1.3	1.3
F5	Max Black	100.0	0.3	15.2	15.0	0.6	0.6	1.1	1.2

Summary Results

I*Color

I*tone

ΔE

Average Score for all patches

97.6

97.7

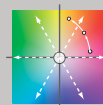
0.9

**Average Score for the Worst 10%
(3 lowest scoring patches)**

85.2

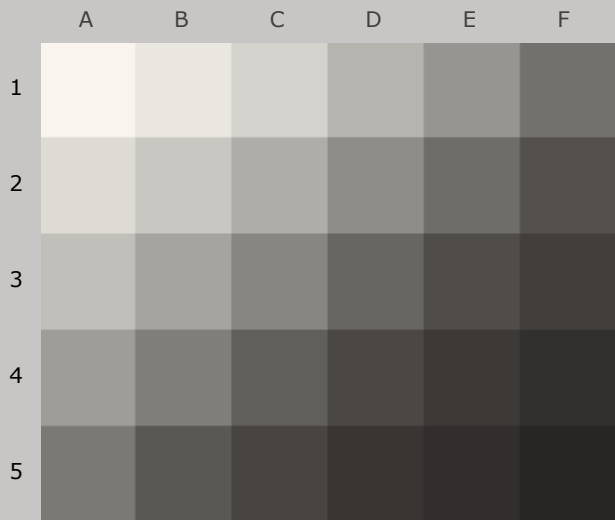
96.1

2.1

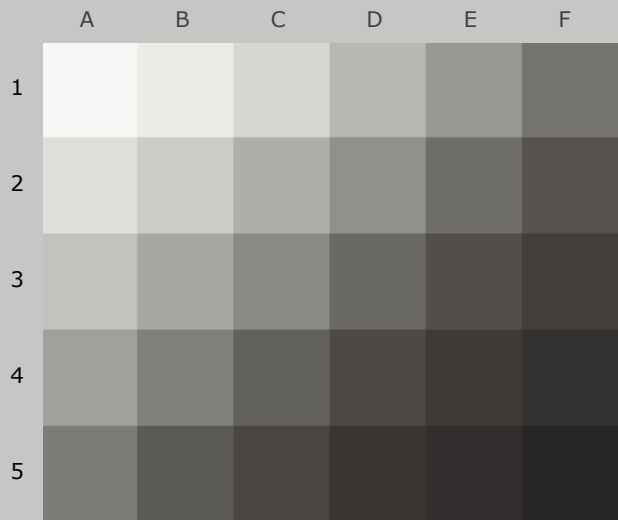


AARDENBURG IMAGING
& ARCHIVES

97.2_{color} / 97.4_{tone}



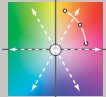
Original Print Colors
(measured before light exposure)



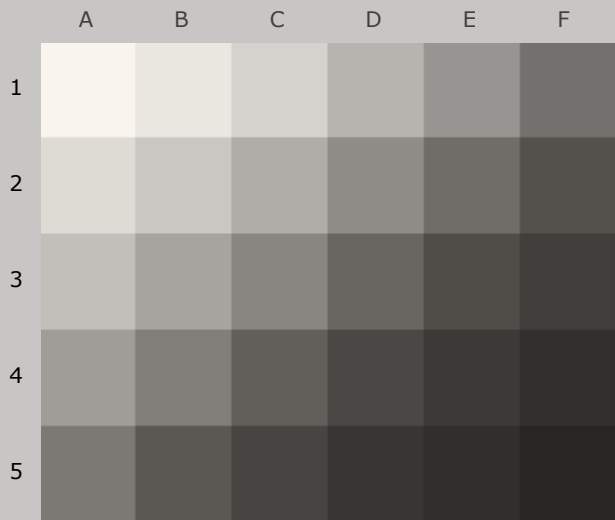
Colors after 30 Megalux-hours
light exposure

*Epson Stylus Pro 11880, Epson OEM UltraChrome K3™ with Vivid Magenta(ABW mode),
Epson Hot Press Natural 330 gsm*

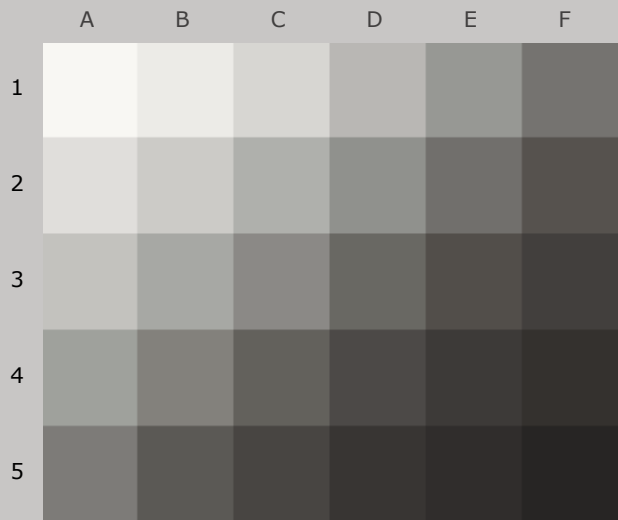
30 Mlux-hrs Light Exposure (i.e., after) Compared to Original Print Colors (i.e., before)

Column/row	Color Patch	I*Color	ΔE	L*		a*		b*	
				Before	After	Before	After	Before	After
A1	Media White	80.5	2.6	96.3	97.3	0.6	0.3	3.6	1.3
B1	Highlight L* = 96	84.0	2.2	91.9	92.8	0.5	0.2	3.8	1.8
C1	Highlight L* = 89	89.7	1.8	84.4	85.4	0.2	-0.2	3.4	2.0
D1	Highlight L* = 78	95.4	1.5	73.4	74.6	-0.1	-0.5	2.8	1.9
E1	Midtone L* = 66	99.7	1.2	61.8	62.9	-0.2	-0.6	2.4	2.1
F1	Midtone L* = 52	100.0	0.9	47.7	48.6	0.0	-0.2	2.5	2.4
A2	Highlight L* = 92	88.3	1.9	87.6	88.6	0.3	0.0	3.6	2.0
B2	Highlight L* = 85	92.2	1.6	80.3	81.4	0.1	-0.3	3.2	2.0
C2	Highlight L* = 75	96.6	1.3	70.4	71.5	-0.2	-0.6	2.7	2.0
D2	Midtone L* = 63	100.0	1.2	58.9	60.0	-0.2	-0.6	2.6	2.3
E2	Midtone L* = 50	100.0	0.8	46.0	46.8	0.1	-0.1	2.6	2.5
F2	Midtone L* = 38	100.0	0.7	34.6	35.3	0.6	0.6	2.7	2.6
A3	Highlight L* = 82	94.6	1.5	77.4	78.5	-0.1	-0.5	2.8	1.9
B3	Midtone L* = 72	97.7	1.4	67.4	68.6	-0.3	-0.8	2.7	2.2
C3	Midtone L* = 60	100.0	1.2	56.0	57.1	-0.2	-0.5	2.7	2.3
D3	Midtone L* = 47	100.0	0.9	43.0	43.9	0.1	0.0	2.8	2.6
E3	Midtone L* = 35	100.0	0.8	32.7	33.4	0.6	0.5	2.7	2.6
F3	Shadow L* = 25	100.0	0.4	26.6	27.1	0.8	0.8	2.1	2.1
A4	Midtone L* = 69	98.3	1.3	64.7	65.8	-0.3	-0.7	2.6	2.1
B4	Midtone L* = 57	100.0	1.1	52.9	53.9	-0.2	-0.5	2.8	2.4
C4	Midtone L* = 45	100.0	0.7	40.4	41.1	0.2	0.2	2.9	2.7
D4	Midtone L* = 32	100.0	0.5	30.7	31.2	0.6	0.7	2.5	2.5
E4	Shadow L* = 20	100.0	0.5	24.3	24.8	0.7	0.7	1.8	1.7
F4	Shadow L* = 10	100.0	0.2	20.1	20.3	0.9	0.9	1.5	1.5
A5	Midtone L* = 55	100.0	0.9	51.0	51.9	-0.2	-0.4	2.8	2.5
B5	Midtone L* = 41	100.0	0.9	37.2	38.1	0.4	0.3	2.9	2.7
C5	Shadow L* = 29	100.0	0.5	28.9	29.4	0.7	0.7	2.1	2.1
D5	Shadow L* = 15	100.0	0.4	22.3	22.6	0.8	0.8	1.8	1.6
E5	Shadow L* = 5	100.0	0.2	19.0	19.2	0.8	0.8	1.3	1.3
F5	Max Black	100.0	0.1	15.2	15.2	0.6	0.6	1.1	1.1
Summary Results		I*Color	I*tone	ΔE	 AARDENBURG IMAGING & ARCHIVES				
Average Score for all patches		97.2	97.4	1.0					
Average Score for the Worst 10% (3 lowest scoring patches)		84.3	95.8	2.2					

97.4_{color} / 97.0_{tone}




Original Print Colors
(measured before light exposure)



Colors after 40 Megalux-hours
light exposure

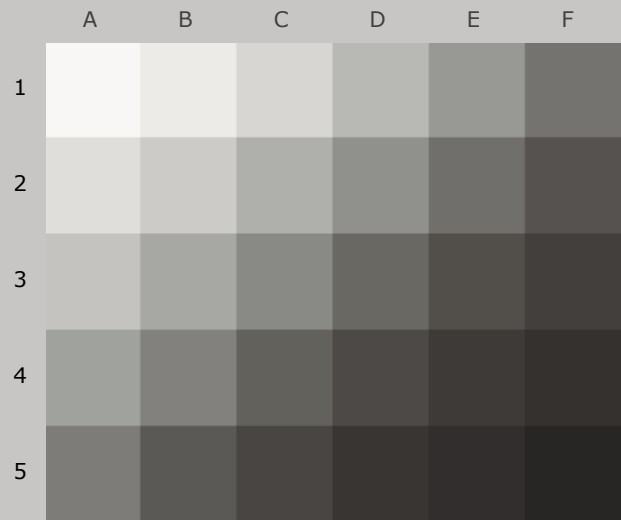
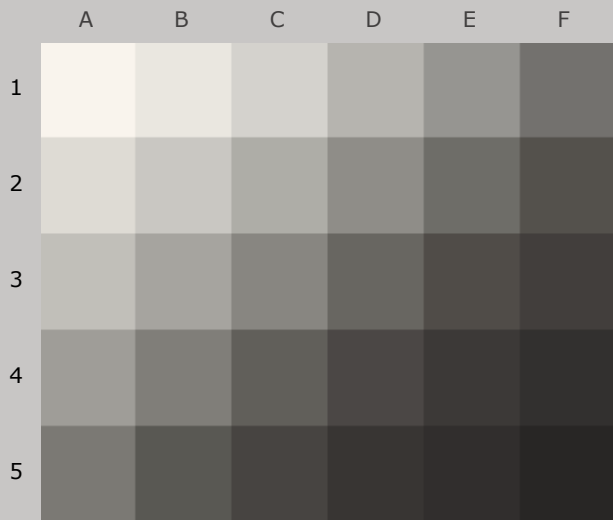
*Epson Stylus Pro 11880, Epson OEM UltraChrome K3™ with Vivid Magenta(ABW mode),
Epson Hot Press Natural 330 gsm*

40 Mlux-hrs Light Exposure (i.e., after) Compared to Original Print Colors (i.e., before)

				L*		a*		b*	
Column/row	Color Patch	I*Color	ΔE	Before	After	Before	After	Before	After
A1	Media White	83.0	2.4	96.3	97.4	0.6	0.3	3.6	1.5
B1	Highlight L* = 96	85.8	2.1	91.9	92.9	0.5	0.2	3.8	2.0
C1	Highlight L* = 89	90.4	1.8	84.4	85.5	0.2	-0.2	3.4	2.1
D1	Highlight L* = 78	96.1	1.4	73.4	74.6	-0.1	-0.5	2.8	2.0
E1	Midtone L* = 66	99.1	1.2	61.8	62.8	-0.2	-0.7	2.4	2.0
F1	Midtone L* = 52	100.0	0.9	47.7	48.6	0.0	-0.2	2.5	2.3
A2	Highlight L* = 92	88.6	1.9	87.6	88.6	0.3	-0.1	3.6	2.1
B2	Highlight L* = 85	92.0	1.7	80.3	81.4	0.1	-0.3	3.2	2.0
C2	Highlight L* = 75	96.9	1.4	70.4	71.6	-0.2	-0.7	2.7	2.1
D2	Midtone L* = 63	99.3	1.2	58.9	60.0	-0.2	-0.6	2.6	2.2
E2	Midtone L* = 50	100.0	1.0	46.0	46.9	0.1	-0.1	2.6	2.3
F2	Midtone L* = 38	100.0	0.7	34.6	35.3	0.6	0.6	2.7	2.5
A3	Highlight L* = 82	94.7	1.5	77.4	78.5	-0.1	-0.5	2.8	1.9
B3	Midtone L* = 72	97.6	1.4	67.4	68.6	-0.3	-0.7	2.7	2.1
C3	Midtone L* = 60	100.0	1.2	56.0	57.1	-0.2	-0.5	2.7	2.4
D3	Midtone L* = 47	100.0	0.9	43.0	43.9	0.1	0.1	2.8	2.6
E3	Midtone L* = 35	100.0	0.8	32.7	33.5	0.6	0.6	2.7	2.5
F3	Shadow L* = 25	100.0	0.5	26.6	27.2	0.8	0.8	2.1	2.2
A4	Midtone L* = 69	98.5	1.4	64.7	65.9	-0.3	-0.7	2.6	2.1
B4	Midtone L* = 57	100.0	1.1	52.9	54.0	-0.2	-0.5	2.8	2.5
C4	Midtone L* = 45	100.0	0.8	40.4	41.1	0.2	0.1	2.9	2.7
D4	Midtone L* = 32	100.0	0.6	30.7	31.2	0.6	0.6	2.5	2.4
E4	Shadow L* = 20	100.0	0.2	24.3	24.5	0.7	0.8	1.8	1.9
F4	Shadow L* = 10	100.0	0.1	20.1	20.2	0.9	0.9	1.5	1.5
A5	Midtone L* = 55	100.0	1.0	51.0	52.0	-0.2	-0.4	2.8	2.5
B5	Midtone L* = 41	100.0	0.7	37.2	37.9	0.4	0.3	2.9	2.7
C5	Shadow L* = 29	100.0	0.5	28.9	29.4	0.7	0.6	2.1	2.1
D5	Shadow L* = 15	100.0	0.1	22.3	22.3	0.8	0.8	1.8	1.8
E5	Shadow L* = 5	100.0	0.2	19.0	18.8	0.8	0.8	1.3	1.4
F5	Max Black	100.0	0.3	15.2	14.9	0.6	0.5	1.1	1.1
Summary Results		I*Color	I*tone	ΔE	<div>AARDENBURG IMAGING & ARCHIVES</div>				
Average Score for all patches		97.4	97.0	1.0					
Average Score for the Worst 10% (3 lowest scoring patches)		85.8	94.4	2.1					

Page 9

96.6_{color} / 96.9_{tone}



*Epson Stylus Pro 11880, Epson OEM UltraChrome K3™ with Vivid Magenta(ABW mode),
Epson Hot Press Natural 330 gsm*

50 Mlux-hrs Light Exposure (i.e., after) Compared to Original Print Colors (i.e., before)

Column/row	Color Patch	I*Color	ΔE	L*		a*		b*	
				Before	After	Before	After	Before	After
A1	Media White	81.0	2.5	96.3	97.4	0.6	0.3	3.6	1.3
B1	Highlight L* = 96	83.5	2.3	91.9	93.0	0.5	0.2	3.8	1.7
C1	Highlight L* = 89	87.7	2.1	84.4	85.6	0.2	-0.1	3.4	1.8
D1	Highlight L* = 78	93.9	1.7	73.4	74.8	-0.1	-0.5	2.8	1.8
E1	Midtone L* = 66	98.0	1.5	61.8	63.1	-0.2	-0.7	2.4	1.9
F1	Midtone L* = 52	100.0	1.1	47.7	48.8	0.0	-0.2	2.5	2.1
A2	Highlight L* = 92	85.9	2.2	87.6	88.8	0.3	-0.1	3.6	1.8
B2	Highlight L* = 85	89.8	1.9	80.3	81.6	0.1	-0.3	3.2	1.7
C2	Highlight L* = 75	95.4	1.7	70.4	71.8	-0.2	-0.7	2.7	1.9
D2	Midtone L* = 63	99.1	1.4	58.9	60.2	-0.2	-0.6	2.6	2.2
E2	Midtone L* = 50	100.0	1.1	46.0	47.0	0.1	-0.1	2.6	2.3
F2	Midtone L* = 38	100.0	0.8	34.6	35.4	0.6	0.6	2.7	2.5
A3	Highlight L* = 82	92.4	1.8	77.4	78.7	-0.1	-0.5	2.8	1.6
B3	Midtone L* = 72	96.3	1.6	67.4	68.7	-0.3	-0.7	2.7	2.0
C3	Midtone L* = 60	98.3	1.5	56.0	57.3	-0.2	-0.6	2.7	2.1
D3	Midtone L* = 47	100.0	1.0	43.0	44.0	0.1	0.1	2.8	2.5
E3	Midtone L* = 35	100.0	0.8	32.7	33.4	0.6	0.6	2.7	2.5
F3	Shadow L* = 25	100.0	0.5	26.6	27.2	0.8	0.7	2.1	2.1
A4	Midtone L* = 69	97.1	1.6	64.7	66.1	-0.3	-0.7	2.6	2.0
B4	Midtone L* = 57	100.0	1.3	52.9	54.2	-0.2	-0.5	2.8	2.4
C4	Midtone L* = 45	100.0	1.0	40.4	41.3	0.2	0.2	2.9	2.6
D4	Midtone L* = 32	100.0	0.6	30.7	31.3	0.6	0.6	2.5	2.3
E4	Shadow L* = 20	100.0	0.3	24.3	24.6	0.7	0.8	1.8	1.8
F4	Shadow L* = 10	100.0	0.2	20.1	20.3	0.9	0.9	1.5	1.5
A5	Midtone L* = 55	100.0	1.2	51.0	52.2	-0.2	-0.4	2.8	2.4
B5	Midtone L* = 41	100.0	0.9	37.2	38.1	0.4	0.3	2.9	2.6
C5	Shadow L* = 29	100.0	0.6	28.9	29.4	0.7	0.7	2.1	2.0
D5	Shadow L* = 15	100.0	0.1	22.3	22.3	0.8	0.9	1.8	1.8
E5	Shadow L* = 5	100.0	0.0	19.0	19.1	0.8	0.8	1.3	1.3
F5	Max Black	100.0	0.2	15.2	15.1	0.6	0.6	1.1	1.2

Summary Results

I*Color

I*tone

ΔE

Average Score for all patches

96.6

96.9

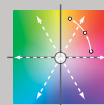
1.2

**Average Score for the Worst 10%
(3 lowest scoring patches)**

83.5

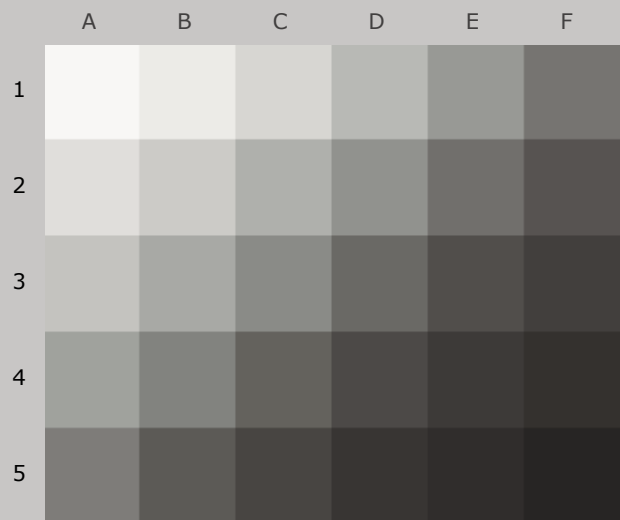
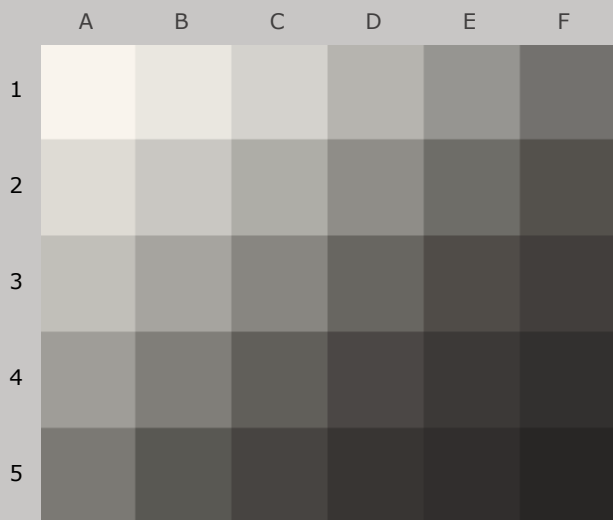
94.8

2.4



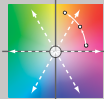
AARDENBURG IMAGING
& ARCHIVES

95.9_{color} / 96.3_{tone}

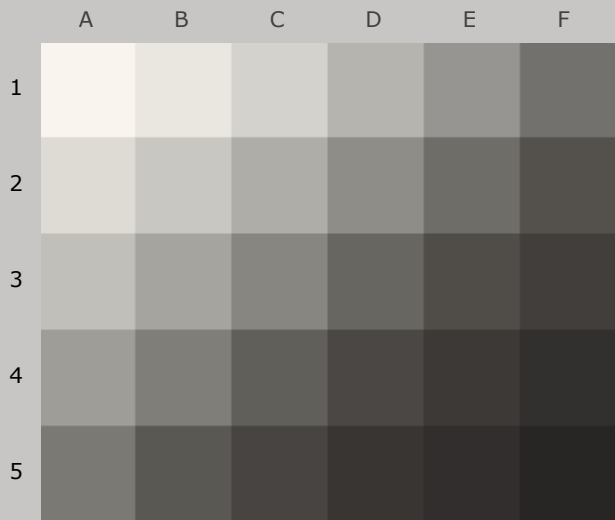


*Epson Stylus Pro 11880, Epson OEM UltraChrome K3™ with Vivid Magenta(ABW mode),
Epson Hot Press Natural 330 gsm*

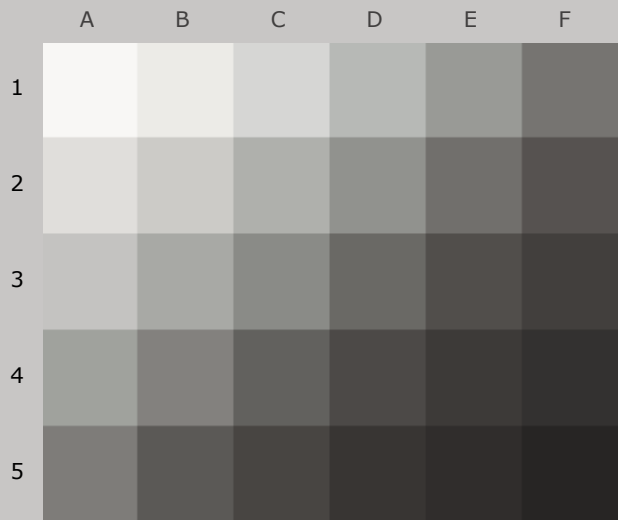
60 Mlux-hrs Light Exposure (i.e., after) Compared to Original Print Colors (i.e., before)

Column/row	Color Patch	I*Color	ΔE	L*		a*		b*	
				Before	After	Before	After	Before	After
A1	Media White	80.5	2.6	96.3	97.4	0.6	0.3	3.6	1.3
B1	Highlight L* = 96	81.8	2.5	91.9	93.0	0.5	0.2	3.8	1.6
C1	Highlight L* = 89	86.0	2.2	84.4	85.7	0.2	-0.1	3.4	1.6
D1	Highlight L* = 78	91.7	1.9	73.4	74.9	-0.1	-0.6	2.8	1.6
E1	Midtone L* = 66	96.7	1.7	61.8	63.2	-0.2	-0.7	2.4	1.8
F1	Midtone L* = 52	100.0	1.3	47.7	48.9	0.0	-0.2	2.5	2.1
A2	Highlight L* = 92	84.4	2.4	87.6	88.8	0.3	-0.1	3.6	1.6
B2	Highlight L* = 85	88.0	2.2	80.3	81.7	0.1	-0.3	3.2	1.6
C2	Highlight L* = 75	93.9	1.9	70.4	72.0	-0.2	-0.7	2.7	1.8
D2	Midtone L* = 63	97.2	1.7	58.9	60.4	-0.2	-0.6	2.6	2.0
E2	Midtone L* = 50	100.0	1.3	46.0	47.2	0.1	-0.1	2.6	2.2
F2	Midtone L* = 38	100.0	1.0	34.6	35.6	0.6	0.6	2.7	2.4
A3	Highlight L* = 82	91.2	1.9	77.4	78.8	-0.1	-0.5	2.8	1.5
B3	Midtone L* = 72	94.5	1.9	67.4	69.0	-0.3	-0.8	2.7	1.8
C3	Midtone L* = 60	97.4	1.7	56.0	57.5	-0.2	-0.6	2.7	2.0
D3	Midtone L* = 47	100.0	1.2	43.0	44.1	0.1	0.1	2.8	2.5
E3	Midtone L* = 35	100.0	0.9	32.7	33.5	0.6	0.6	2.7	2.5
F3	Shadow L* = 25	100.0	0.6	26.6	27.2	0.8	0.8	2.1	2.1
A4	Midtone L* = 69	96.0	1.8	64.7	66.3	-0.3	-0.8	2.6	1.9
B4	Midtone L* = 57	99.1	1.5	52.9	54.3	-0.2	-0.5	2.8	2.3
C4	Midtone L* = 45	100.0	1.1	40.4	41.4	0.2	0.2	2.9	2.5
D4	Midtone L* = 32	100.0	0.7	30.7	31.3	0.6	0.6	2.5	2.3
E4	Shadow L* = 20	100.0	0.4	24.3	24.7	0.7	0.8	1.8	1.8
F4	Shadow L* = 10	100.0	0.2	20.1	20.3	0.9	0.9	1.5	1.5
A5	Midtone L* = 55	98.7	1.4	51.0	52.3	-0.2	-0.4	2.8	2.2
B5	Midtone L* = 41	100.0	1.1	37.2	38.2	0.4	0.4	2.9	2.6
C5	Shadow L* = 29	100.0	0.6	28.9	29.4	0.7	0.7	2.1	2.0
D5	Shadow L* = 15	100.0	0.1	22.3	22.3	0.8	0.8	1.8	1.8
E5	Shadow L* = 5	100.0	0.2	19.0	18.8	0.8	0.9	1.3	1.3
F5	Max Black	100.0	0.3	15.2	15.0	0.6	0.6	1.1	1.2
Summary Results		I*Color	I*tone	ΔE	 AARDENBURG IMAGING & ARCHIVES				
Average Score for all patches		95.9	96.3	1.3					
Average Score for the Worst 10% (3 lowest scoring patches)		82.2	93.5	2.5					

95.5_{color} / 96.2_{tone}



Original Print Colors
(measured before light exposure)



Colors after 70 Megalux-hours
light exposure

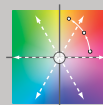
*Epson Stylus Pro 11880, Epson OEM UltraChrome K3™ with Vivid Magenta(ABW mode),
Epson Hot Press Natural 330 gsm*

70 Mlux-hrs Light Exposure (i.e., after) Compared to Original Print Colors (i.e., before)

Column/row	Color Patch	I*Color	ΔE	L*		a*		b*	
				Before	After	Before	After	Before	After
A1	Media White	80.6	2.5	96.3	97.3	0.6	0.3	3.6	1.3
B1	Highlight L* = 96	82.5	2.4	91.9	92.9	0.5	0.2	3.8	1.6
C1	Highlight L* = 89	84.3	2.4	84.4	85.6	0.2	-0.1	3.4	1.5
D1	Highlight L* = 78	90.4	2.0	73.4	74.9	-0.1	-0.6	2.8	1.4
E1	Midtone L* = 66	95.8	1.8	61.8	63.4	-0.2	-0.7	2.4	1.6
F1	Midtone L* = 52	100.0	1.3	47.7	48.9	0.0	-0.2	2.5	2.1
A2	Highlight L* = 92	83.4	2.4	87.6	88.7	0.3	0.0	3.6	1.5
B2	Highlight L* = 85	87.4	2.1	80.3	81.6	0.1	-0.3	3.2	1.5
C2	Highlight L* = 75	93.0	1.9	70.4	71.9	-0.2	-0.7	2.7	1.7
D2	Midtone L* = 63	96.1	1.8	58.9	60.4	-0.2	-0.6	2.6	1.9
E2	Midtone L* = 50	100.0	1.2	46.0	47.1	0.1	-0.1	2.6	2.2
F2	Midtone L* = 38	100.0	0.8	34.6	35.4	0.6	0.7	2.7	2.4
A3	Highlight L* = 82	90.5	2.0	77.4	78.8	-0.1	-0.5	2.8	1.4
B3	Midtone L* = 72	93.4	1.9	67.4	68.9	-0.3	-0.8	2.7	1.7
C3	Midtone L* = 60	97.4	1.7	56.0	57.5	-0.2	-0.5	2.7	2.0
D3	Midtone L* = 47	99.3	1.3	43.0	44.2	0.1	0.1	2.8	2.3
E3	Midtone L* = 35	100.0	0.8	32.7	33.4	0.6	0.7	2.7	2.5
F3	Shadow L* = 25	100.0	0.5	26.6	27.1	0.8	0.8	2.1	2.0
A4	Midtone L* = 69	95.4	1.8	64.7	66.2	-0.3	-0.8	2.6	1.8
B4	Midtone L* = 57	97.0	1.5	52.9	54.2	-0.2	-0.4	2.8	2.0
C4	Midtone L* = 45	100.0	1.0	40.4	41.3	0.2	0.2	2.9	2.4
D4	Midtone L* = 32	100.0	0.9	30.7	31.5	0.6	0.6	2.5	2.2
E4	Shadow L* = 20	100.0	0.4	24.3	24.7	0.7	0.8	1.8	1.7
F4	Shadow L* = 10	100.0	0.2	20.1	20.3	0.9	0.9	1.5	1.5
A5	Midtone L* = 55	98.6	1.3	51.0	52.2	-0.2	-0.3	2.8	2.1
B5	Midtone L* = 41	100.0	1.0	37.2	38.2	0.4	0.4	2.9	2.4
C5	Shadow L* = 29	100.0	0.5	28.9	29.4	0.7	0.7	2.1	2.0
D5	Shadow L* = 15	100.0	0.2	22.3	22.5	0.8	0.9	1.8	1.7
E5	Shadow L* = 5	100.0	0.2	19.0	18.9	0.8	0.9	1.3	1.3
F5	Max Black	100.0	0.3	15.2	15.0	0.6	0.6	1.1	1.2

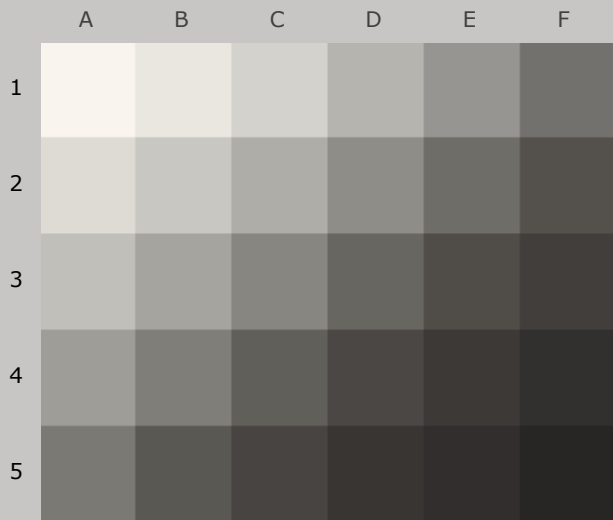
Summary Results

I*Color	I*tone	ΔE
95.5	96.2	1.3
82.1	94.0	2.4

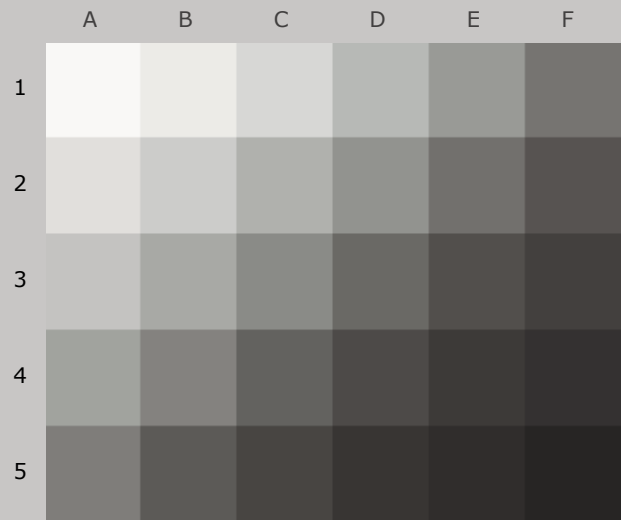


AARDENBURG IMAGING
& ARCHIVES

94.9_{color} / 95.6_{tone}




Original Print Colors
(measured before light exposure)



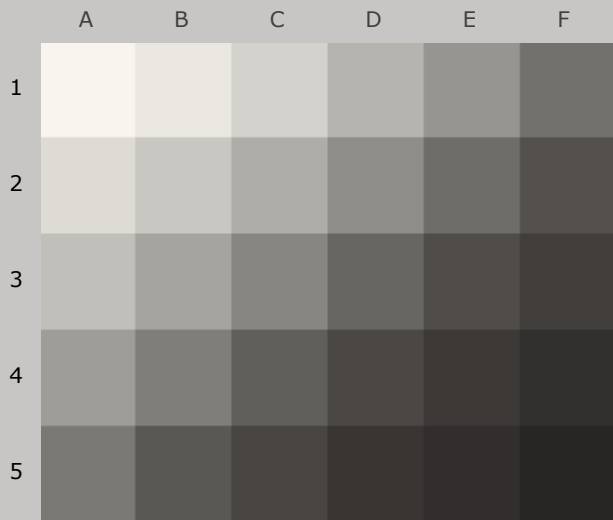
Colors after 80 Megalux-hours
light exposure

*Epson Stylus Pro 11880, Epson OEM UltraChrome K3™ with Vivid Magenta(ABW mode),
Epson Hot Press Natural 330 gsm*

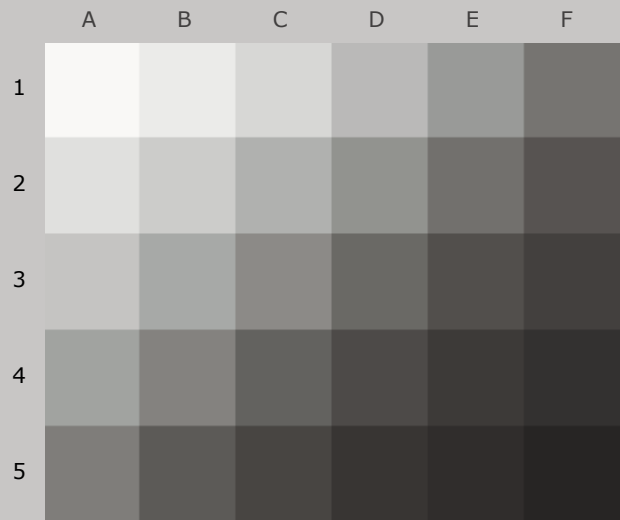
80 Mlux-hrs Light Exposure (i.e., after) Compared to Original Print Colors (i.e., before)

Column/row	Color Patch	I*Color	ΔE	L*		a*		b*	
				Before	After	Before	After	Before	After
A1	Media White	81.5	2.5	96.3	97.5	0.6	0.3	3.6	1.4
B1	Highlight L* = 96	81.5	2.6	91.9	93.1	0.5	0.2	3.8	1.5
C1	Highlight L* = 89	84.2	2.5	84.4	85.8	0.2	-0.1	3.4	1.5
D1	Highlight L* = 78	90.0	2.2	73.4	75.1	-0.1	-0.5	2.8	1.4
E1	Midtone L* = 66	95.0	2.0	61.8	63.5	-0.2	-0.7	2.4	1.6
F1	Midtone L* = 52	98.4	1.5	47.7	49.1	0.0	-0.2	2.5	1.9
A2	Highlight L* = 92	83.5	2.5	87.6	88.9	0.3	-0.1	3.6	1.6
B2	Highlight L* = 85	86.4	2.4	80.3	81.9	0.1	-0.3	3.2	1.4
C2	Highlight L* = 75	91.5	2.1	70.4	72.1	-0.2	-0.7	2.7	1.5
D2	Midtone L* = 63	95.8	2.0	58.9	60.6	-0.2	-0.6	2.6	1.8
E2	Midtone L* = 50	98.8	1.5	46.0	47.3	0.1	0.0	2.6	2.0
F2	Midtone L* = 38	100.0	1.1	34.6	35.6	0.6	0.6	2.7	2.3
A3	Highlight L* = 82	88.9	2.2	77.4	79.0	-0.1	-0.5	2.8	1.3
B3	Midtone L* = 72	92.9	2.1	67.4	69.2	-0.3	-0.8	2.7	1.6
C3	Midtone L* = 60	95.0	2.0	56.0	57.7	-0.2	-0.5	2.7	1.8
D3	Midtone L* = 47	99.2	1.4	43.0	44.3	0.1	0.1	2.8	2.3
E3	Midtone L* = 35	100.0	1.1	32.7	33.7	0.6	0.6	2.7	2.3
F3	Shadow L* = 25	100.0	0.7	26.6	27.3	0.8	0.8	2.1	1.9
A4	Midtone L* = 69	93.8	2.1	64.7	66.5	-0.3	-0.8	2.6	1.6
B4	Midtone L* = 57	97.1	1.8	52.9	54.5	-0.2	-0.5	2.8	2.1
C4	Midtone L* = 45	98.3	1.4	40.4	41.6	0.2	0.2	2.9	2.3
D4	Midtone L* = 32	100.0	1.1	30.7	31.7	0.6	0.6	2.5	2.1
E4	Shadow L* = 20	100.0	0.5	24.3	24.8	0.7	0.8	1.8	1.6
F4	Shadow L* = 10	100.0	0.6	20.1	20.7	0.9	0.9	1.5	1.3
A5	Midtone L* = 55	96.6	1.7	51.0	52.5	-0.2	-0.3	2.8	1.9
B5	Midtone L* = 41	99.4	1.3	37.2	38.4	0.4	0.4	2.9	2.3
C5	Shadow L* = 29	100.0	0.8	28.9	29.6	0.7	0.7	2.1	1.8
D5	Shadow L* = 15	100.0	0.3	22.3	22.5	0.8	0.9	1.8	1.6
E5	Shadow L* = 5	100.0	0.2	19.0	18.9	0.8	0.8	1.3	1.3
F5	Max Black	100.0	0.3	15.2	15.0	0.6	0.6	1.1	1.1
Summary Results		I*Color	I*tone	ΔE	 AARDENBURG IMAGING & ARCHIVES				
Average Score for all patches		94.9	95.6	1.5					
Average Score for the Worst 10% (3 lowest scoring patches)		82.2	91.7	2.5					

94.1_{color} / 95.4_{tone}



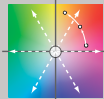
Original Print Colors
(measured before light exposure)



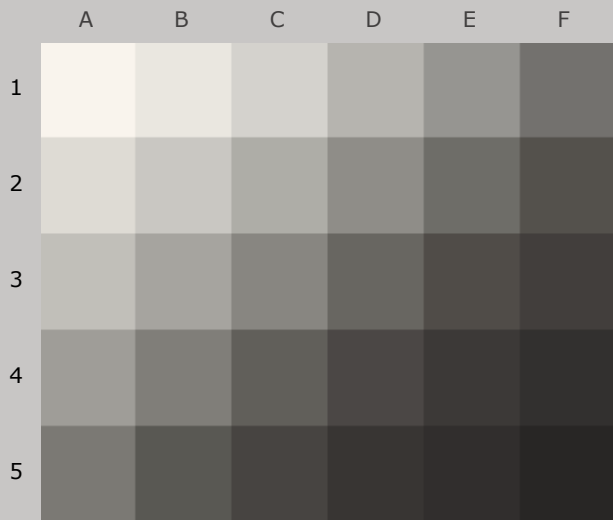
Colors after 90 Megalux-hours
light exposure

*Epson Stylus Pro 11880, Epson OEM UltraChrome K3™ with Vivid Magenta(ABW mode),
Epson Hot Press Natural 330 gsm*

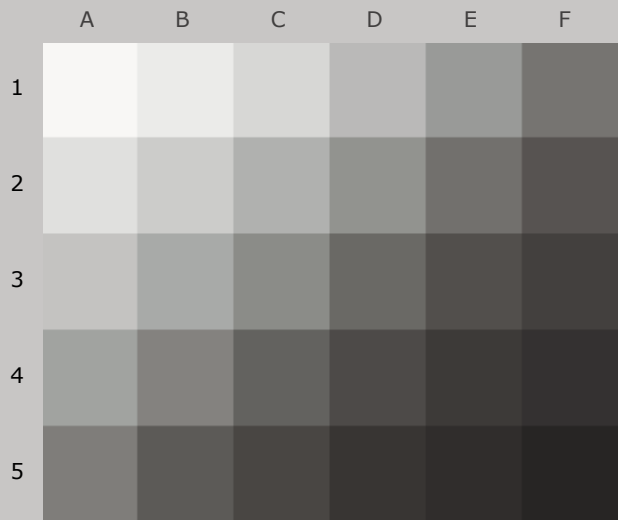
90 Mlux-hrs Light Exposure (i.e., after) Compared to Original Print Colors (i.e., before)

Column/row	Color Patch	I*Color	ΔE	L*		a*		b*	
				Before	After	Before	After	Before	After
A1	Media White	81.0	2.6	96.3	97.5	0.6	0.3	3.6	1.3
B1	Highlight L* = 96	80.1	2.7	91.9	93.1	0.5	0.2	3.8	1.4
C1	Highlight L* = 89	82.6	2.6	84.4	85.8	0.2	0.0	3.4	1.3
D1	Highlight L* = 78	88.1	2.3	73.4	75.1	-0.1	-0.5	2.8	1.2
E1	Midtone L* = 66	94.1	2.0	61.8	63.5	-0.2	-0.7	2.4	1.4
F1	Midtone L* = 52	97.6	1.6	47.7	49.1	0.0	-0.2	2.5	1.8
A2	Highlight L* = 92	81.6	2.6	87.6	89.0	0.3	0.0	3.6	1.4
B2	Highlight L* = 85	84.6	2.5	80.3	81.9	0.1	-0.2	3.2	1.2
C2	Highlight L* = 75	90.2	2.3	70.4	72.2	-0.2	-0.6	2.7	1.4
D2	Midtone L* = 63	94.6	2.0	58.9	60.6	-0.2	-0.6	2.6	1.7
E2	Midtone L* = 50	97.8	1.5	46.0	47.3	0.1	0.0	2.6	1.9
F2	Midtone L* = 38	100.0	1.1	34.6	35.6	0.6	0.7	2.7	2.2
A3	Highlight L* = 82	87.4	2.4	77.4	79.0	-0.1	-0.4	2.8	1.1
B3	Midtone L* = 72	91.0	2.3	67.4	69.2	-0.3	-0.7	2.7	1.4
C3	Midtone L* = 60	93.9	2.1	56.0	57.8	-0.2	-0.5	2.7	1.6
D3	Midtone L* = 47	98.4	1.5	43.0	44.4	0.1	0.2	2.8	2.2
E3	Midtone L* = 35	100.0	1.1	32.7	33.7	0.6	0.6	2.7	2.3
F3	Shadow L* = 25	100.0	0.7	26.6	27.3	0.8	0.8	2.1	1.9
A4	Midtone L* = 69	92.4	2.2	64.7	66.6	-0.3	-0.7	2.6	1.5
B4	Midtone L* = 57	95.7	1.9	52.9	54.6	-0.2	-0.4	2.8	1.9
C4	Midtone L* = 45	97.4	1.5	40.4	41.7	0.2	0.3	2.9	2.2
D4	Midtone L* = 32	100.0	1.1	30.7	31.7	0.6	0.7	2.5	2.1
E4	Shadow L* = 20	100.0	0.5	24.3	24.7	0.7	0.8	1.8	1.7
F4	Shadow L* = 10	100.0	0.4	20.1	20.5	0.9	0.9	1.5	1.4
A5	Midtone L* = 55	96.2	1.8	51.0	52.6	-0.2	-0.3	2.8	1.9
B5	Midtone L* = 41	98.9	1.3	37.2	38.4	0.4	0.5	2.9	2.3
C5	Shadow L* = 29	100.0	0.8	28.9	29.6	0.7	0.7	2.1	1.8
D5	Shadow L* = 15	100.0	0.2	22.3	22.4	0.8	0.9	1.8	1.6
E5	Shadow L* = 5	100.0	0.2	19.0	18.8	0.8	0.9	1.3	1.3
F5	Max Black	100.0	0.3	15.2	15.0	0.6	0.6	1.1	1.1
Summary Results		I*Color	I*tone	ΔE	 AARDENBURG IMAGING & ARCHIVES				
Average Score for all patches		94.1	95.4	1.6					
Average Score for the Worst 10% (3 lowest scoring patches)		80.9	91.8	2.6					

93.4_{color} / 95.1_{tone}




Original Print Colors
(measured before light exposure)



Colors after 100 Megalux-hours
light exposure

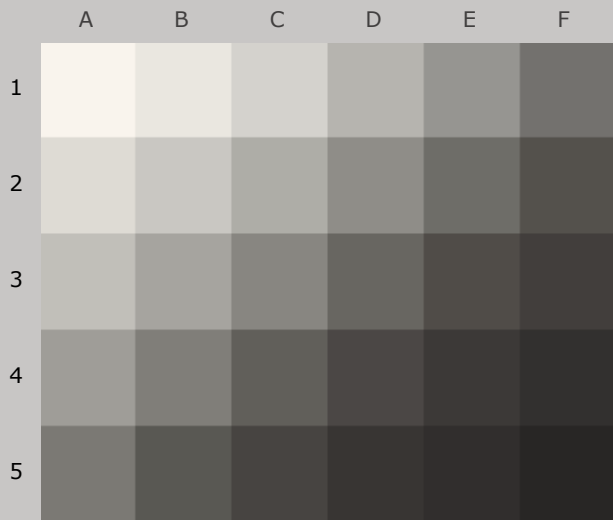
*Epson Stylus Pro 11880, Epson OEM UltraChrome K3™ with Vivid Magenta(ABW mode),
Epson Hot Press Natural 330 gsm*

100 Mlux-hrs Light Exposure (i.e., after) Compared to Original Print Colors (i.e., before)

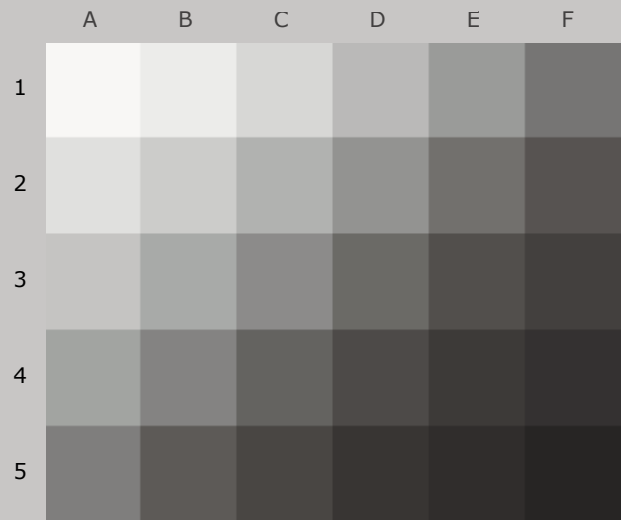
L*				L*		a*		b*	
Column/row	Color Patch	I*Color	ΔE	Before	After	Before	After	Before	After
A1	Media White	81.4	2.5	96.3	97.4	0.6	0.3	3.6	1.4
B1	Highlight L* = 96	80.3	2.7	91.9	93.1	0.5	0.3	3.8	1.4
C1	Highlight L* = 89	80.7	2.7	84.4	85.8	0.2	-0.1	3.4	1.1
D1	Highlight L* = 78	86.5	2.5	73.4	75.2	-0.1	-0.5	2.8	1.0
E1	Midtone L* = 66	92.2	2.2	61.8	63.6	-0.2	-0.7	2.4	1.2
F1	Midtone L* = 52	96.6	1.7	47.7	49.2	0.0	-0.1	2.5	1.7
A2	Highlight L* = 92	80.8	2.7	87.6	88.9	0.3	0.0	3.6	1.3
B2	Highlight L* = 85	82.9	2.6	80.3	81.9	0.1	-0.3	3.2	1.1
C2	Highlight L* = 75	89.0	2.4	70.4	72.3	-0.2	-0.6	2.7	1.2
D2	Midtone L* = 63	92.9	2.2	58.9	60.7	-0.2	-0.6	2.6	1.5
E2	Midtone L* = 50	96.9	1.7	46.0	47.5	0.1	0.0	2.6	1.8
F2	Midtone L* = 38	98.9	1.3	34.6	35.7	0.6	0.6	2.7	2.1
A3	Highlight L* = 82	85.7	2.5	77.4	79.0	-0.1	-0.4	2.8	1.0
B3	Midtone L* = 72	89.8	2.4	67.4	69.3	-0.3	-0.7	2.7	1.3
C3	Midtone L* = 60	93.5	2.2	56.0	57.9	-0.2	-0.5	2.7	1.6
D3	Midtone L* = 47	97.3	1.6	43.0	44.5	0.1	0.2	2.8	2.1
E3	Midtone L* = 35	100.0	1.2	32.7	33.7	0.6	0.7	2.7	2.2
F3	Shadow L* = 25	100.0	0.8	26.6	27.3	0.8	0.9	2.1	1.8
A4	Midtone L* = 69	91.4	2.4	64.7	66.7	-0.3	-0.7	2.6	1.4
B4	Midtone L* = 57	94.7	2.0	52.9	54.7	-0.2	-0.4	2.8	1.8
C4	Midtone L* = 45	96.5	1.6	40.4	41.8	0.2	0.3	2.9	2.1
D4	Midtone L* = 32	99.8	1.3	30.7	31.8	0.6	0.7	2.5	2.0
E4	Shadow L* = 20	100.0	0.6	24.3	24.8	0.7	0.8	1.8	1.6
F4	Shadow L* = 10	100.0	0.5	20.1	20.6	0.9	0.9	1.5	1.4
A5	Midtone L* = 55	95.6	1.9	51.0	52.6	-0.2	-0.3	2.8	1.8
B5	Midtone L* = 41	98.2	1.4	37.2	38.4	0.4	0.5	2.9	2.2
C5	Shadow L* = 29	100.0	0.9	28.9	29.7	0.7	0.8	2.1	1.8
D5	Shadow L* = 15	100.0	0.3	22.3	22.5	0.8	0.9	1.8	1.6
E5	Shadow L* = 5	100.0	0.2	19.0	18.8	0.8	0.9	1.3	1.3
F5	Max Black	100.0	0.4	15.2	14.9	0.6	0.6	1.1	1.1
Summary Results		I*Color	I*tone	ΔE	<div>AARDENBURG IMAGING & ARCHIVES</div>				
Average Score for all patches		93.4	95.1	1.7					
Average Score for the Worst 10% (3 lowest scoring patches)		80.6	91.2	2.7					

Page 15

90.8_{color}/94.6_{tone}



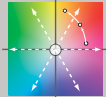
Original Print Colors
(measured before light exposure)



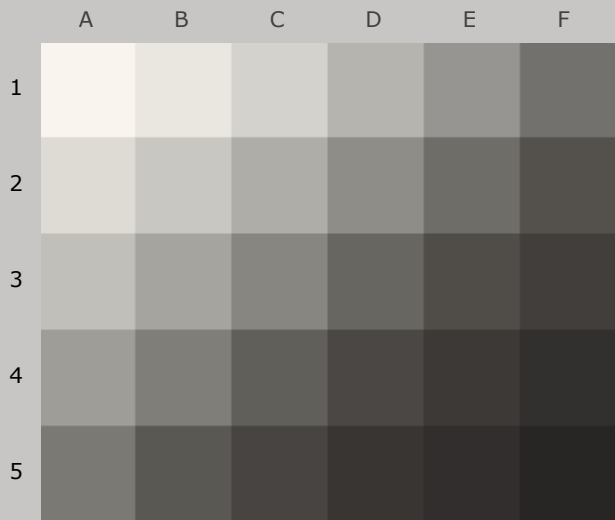
Colors after 120 Megalux-hours
light exposure

*Epson Stylus Pro 11880, Epson OEM UltraChrome K3™ with Vivid Magenta(ABW mode),
Epson Hot Press Natural 330 gsm*

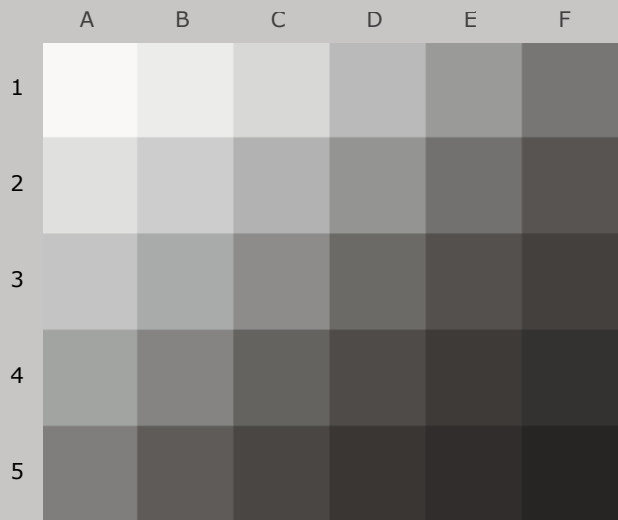
120 Mlux-hrs Light Exposure (i.e., after) Compared to Original Print Colors (i.e., before)

				L*		a*		b*	
Column/row	Color Patch	I*Color	ΔE	Before	After	Before	After	Before	After
A1	Media White	79.4	2.7	96.3	97.4	0.6	0.3	3.6	1.2
B1	Highlight L* = 96	77.5	2.9	91.9	93.1	0.5	0.3	3.8	1.2
C1	Highlight L* = 89	77.5	3.1	84.4	85.9	0.2	0.0	3.4	0.8
D1	Highlight L* = 78	81.8	3.0	73.4	75.4	-0.1	-0.4	2.8	0.5
E1	Midtone L* = 66	89.0	2.6	61.8	63.9	-0.2	-0.6	2.4	0.9
F1	Midtone L* = 52	93.4	2.0	47.7	49.4	0.0	-0.1	2.5	1.4
A2	Highlight L* = 92	77.3	3.0	87.6	89.1	0.3	0.1	3.6	1.0
B2	Highlight L* = 85	78.5	3.1	80.3	82.1	0.1	-0.2	3.2	0.6
C2	Highlight L* = 75	84.0	2.9	70.4	72.5	-0.2	-0.5	2.7	0.7
D2	Midtone L* = 63	89.5	2.6	58.9	61.0	-0.2	-0.5	2.6	1.2
E2	Midtone L* = 50	94.0	2.0	46.0	47.6	0.1	0.1	2.6	1.5
F2	Midtone L* = 38	97.2	1.5	34.6	35.9	0.6	0.7	2.7	1.9
A3	Highlight L* = 82	81.5	2.9	77.4	79.2	-0.1	-0.3	2.8	0.5
B3	Midtone L* = 72	85.2	2.9	67.4	69.5	-0.3	-0.6	2.7	0.8
C3	Midtone L* = 60	88.9	2.7	56.0	58.1	-0.2	-0.5	2.7	1.1
D3	Midtone L* = 47	94.5	1.9	43.0	44.6	0.1	0.2	2.8	1.8
E3	Midtone L* = 35	97.9	1.4	32.7	33.9	0.6	0.7	2.7	2.0
F3	Shadow L* = 25	100.0	0.9	26.6	27.5	0.8	0.9	2.1	1.7
A4	Midtone L* = 69	87.2	2.8	64.7	66.9	-0.3	-0.6	2.6	0.9
B4	Midtone L* = 57	91.1	2.4	52.9	54.9	-0.2	-0.4	2.8	1.5
C4	Midtone L* = 45	94.0	1.8	40.4	41.9	0.2	0.3	2.9	1.9
D4	Midtone L* = 32	98.3	1.3	30.7	31.8	0.6	0.7	2.5	1.8
E4	Shadow L* = 20	100.0	0.6	24.3	24.9	0.7	0.8	1.8	1.5
F4	Shadow L* = 10	100.0	0.5	20.1	20.6	0.9	0.9	1.5	1.3
A5	Midtone L* = 55	91.5	2.3	51.0	52.8	-0.2	-0.2	2.8	1.4
B5	Midtone L* = 41	95.6	1.6	37.2	38.6	0.4	0.5	2.9	2.0
C5	Shadow L* = 29	100.0	1.0	28.9	29.7	0.7	0.8	2.1	1.7
D5	Shadow L* = 15	100.0	0.3	22.3	22.5	0.8	0.9	1.8	1.5
E5	Shadow L* = 5	100.0	0.2	19.0	18.8	0.8	0.9	1.3	1.3
F5	Max Black	100.0	0.4	15.2	14.9	0.6	0.6	1.1	1.1
Summary Results		I*Color	I*tone	ΔE	 AARDENBURG IMAGING & ARCHIVES				
Average Score for all patches		90.8	94.6	2.0					
Average Score for the Worst 10% (3 lowest scoring patches)		77.5	90.6	3.1					

89.1_{color}/94.1_{tone}




Original Print Colors
(measured before light exposure)

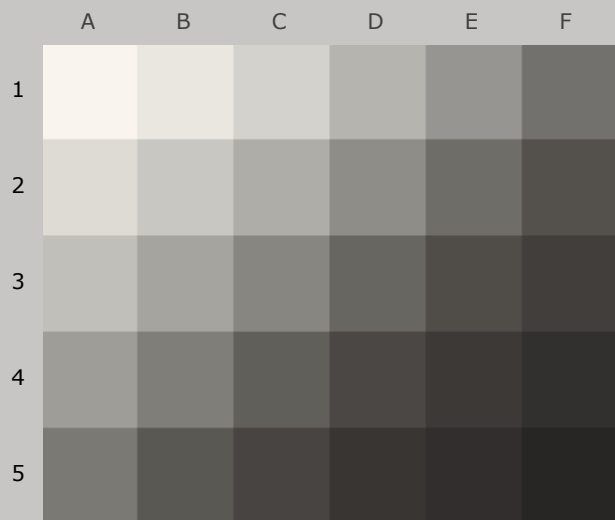


Colors after 140 Megalux-hours
light exposure

*Epson Stylus Pro 11880, Epson OEM UltraChrome K3™ with Vivid Magenta(ABW mode),
Epson Hot Press Natural 330 gsm*

140 Mlux-hrs Light Exposure (i.e., after) Compared to Original Print Colors (i.e., before)

				L*		a*		b*	
Column/row	Color Patch	I*Color	ΔE	Before	After	Before	After	Before	After
A1	Media White	81.4	2.5	96.3	97.5	0.6	0.3	3.6	1.4
B1	Highlight L* = 96	78.5	2.9	91.9	93.2	0.5	0.3	3.8	1.3
C1	Highlight L* = 89	76.8	3.2	84.4	86.1	0.2	0.0	3.4	0.7
D1	Highlight L* = 78	78.8	3.3	73.4	75.6	-0.1	-0.3	2.8	0.3
E1	Midtone L* = 66	85.8	3.0	61.8	64.1	-0.2	-0.6	2.4	0.6
F1	Midtone L* = 52	90.2	2.4	47.7	49.6	0.0	0.0	2.5	1.1
A2	Highlight L* = 92	77.6	3.1	87.6	89.2	0.3	0.1	3.6	1.0
B2	Highlight L* = 85	76.9	3.3	80.3	82.2	0.1	-0.1	3.2	0.5
C2	Highlight L* = 75	80.7	3.2	70.4	72.7	-0.2	-0.5	2.7	0.4
D2	Midtone L* = 63	86.2	3.0	58.9	61.2	-0.2	-0.4	2.6	0.8
E2	Midtone L* = 50	91.4	2.3	46.0	47.8	0.1	0.1	2.6	1.3
F2	Midtone L* = 38	94.9	1.7	34.6	36.0	0.6	0.8	2.7	1.7
A3	Highlight L* = 82	79.2	3.2	77.4	79.4	-0.1	-0.3	2.8	0.3
B3	Midtone L* = 72	81.5	3.2	67.4	69.7	-0.3	-0.6	2.7	0.5
C3	Midtone L* = 60	85.8	3.0	56.0	58.3	-0.2	-0.4	2.7	0.8
D3	Midtone L* = 47	91.4	2.2	43.0	44.8	0.1	0.3	2.8	1.5
E3	Midtone L* = 35	96.1	1.6	32.7	34.0	0.6	0.7	2.7	1.8
F3	Shadow L* = 25	99.6	1.0	26.6	27.5	0.8	0.9	2.1	1.6
A4	Midtone L* = 69	83.7	3.1	64.7	67.1	-0.3	-0.6	2.6	0.6
B4	Midtone L* = 57	87.6	2.7	52.9	55.1	-0.2	-0.3	2.8	1.1
C4	Midtone L* = 45	91.1	2.2	40.4	42.1	0.2	0.4	2.9	1.6
D4	Midtone L* = 32	96.6	1.6	30.7	32.1	0.6	0.7	2.5	1.7
E4	Shadow L* = 20	100.0	0.7	24.3	24.9	0.7	0.8	1.8	1.5
F4	Shadow L* = 10	100.0	0.8	20.1	20.9	0.9	0.9	1.5	1.3
A5	Midtone L* = 55	88.0	2.6	51.0	53.0	-0.2	-0.2	2.8	1.1
B5	Midtone L* = 41	92.9	1.9	37.2	38.8	0.4	0.6	2.9	1.7
C5	Shadow L* = 29	98.9	1.2	28.9	29.9	0.7	0.8	2.1	1.5
D5	Shadow L* = 15	100.0	0.4	22.3	22.6	0.8	1.0	1.8	1.5
E5	Shadow L* = 5	100.0	0.2	19.0	18.9	0.8	0.9	1.3	1.2
F5	Max Black	100.0	0.3	15.2	15.0	0.6	0.6	1.1	1.1
Summary Results		I*Color	I*tone	ΔE	 AARDENBURG IMAGING & ARCHIVES				
Average Score for all patches		89.1	94.1	2.2					
Average Score for the Worst 10% (3 lowest scoring patches)		77.1	89.6	3.3					



Original Print Colors
(measured before light exposure)



Next update is for 160 Megalux-hours
light exposure

*Epson Stylus Pro 11880, Epson OEM UltraChrome K3™ with Vivid Magenta(ABW mode),
Epson Hot Press Natural 330 gsm*



AARDENBURG IMAGING
& ARCHIVES