

Aardenburg

144



IMAGING & ARCHIVES

Tested System:

ID#:207

Printer: Epson Stylus Pro 3880

Inks/Colorants: Epson OEM UltraChrome K3™ with Vivid Magenta

Media: Kernow Coatings Ltd – Tresco Design 160gsm 50/50
Polyester/Cotton

Coating(s): no additional coating

Sample #: AaI_20100913_SN025

Testing Status: 160 Megalux hours total light exposure

Testing Is ongoing, next update on approximately OCT 05, 2014

Conservation Display Rating (CDR)

Lower limit: 114 Megalux hours (for weakest 10% of the color patches)

Upper limit: 150 Megalux hours (for average of all the color patches)

Note: a CDR with narrow range (typically less than 2:1) indicates relatively even overall fading of the image. A wide range indicates faster fading in certain local colors/tones prior to general fading of most colors/tones in the entire image. Compare ratings for different systems directly and/or use the table on page 2 to estimate time (years) on display.

* Please read document AaI_2009_0118_TA-01.pdf, “**An Overview of the AaI&A Conservation Display Ratings**”, located on the Documents page of the AaI&A website for further explanation of the Conservation display ratings.

This report has been prepared for the exclusive use of members of Aardenburg Imaging & Archives. Members may share this information with other members, friends, colleagues, and individual clients. It may also be distributed to groups for educational purposes (classes, lectures, educational seminars. etc). However, all contents including but not limited to Conservation Display Ratings may not be posted to web sites and may not be reproduced or distributed for corporate research, marketing, or other promotional purposes without written permission from Aardenburg Imaging & Archives.

copyright ©2014

<http://www.aardenburg-imaging.com>

Aardenburg Imaging and Archives
Rev:8/14/14



About this Report

This report contains light fastness information about a sample test print produced by a specific digital printing system. “System” refers to all hardware, software, and materials used to make the finished print. The hardware, software, material components, and printmaker’s skills contribute to the final image quality and image permanence. The tested sample is made with current or recently discontinued stocks of commercially available products unless otherwise stated. Each sample has been prepared by Aardenburg Imaging & Archives or one of its members in accordance with customary print making practices unless otherwise noted. The sample may also contain additional finishing materials such as overcoats and laminates which are also noted when used. Finally, the sample has been tested under standardized conditions that are defined on the Sample Description page (see page 4). AaI&A makes every effort to ensure but cannot guarantee that the samples are properly identified and documented and that test results are accurate. For this reason, AaI&A also strives to test independently produced sample replicates in order to increase sampling confidence and to provide information on process variability. Please compare the results in this report to replicate test samples when the data become available.

Understanding this Report



The magnitude and visual appearance of fading depends not only on the chosen printing system but the chosen image as well. In other words, different images are comprised of different colors, and the fading relationships between those colors dictate how the image will look as it fades. The sample print in this test report was made by reproducing the digital image shown on the left. It contains 30 standard colors. 24 of the colors are colorimetrically matched to the Macbeth ColorChecker™ chart viewed under D50 illumination. The remaining six colors supplement the ColorChecker™ array with four additional skin tone colors, one patch for paper white, and another for maximum black. The additional colors also round out the distribution of CIELAB L* (lightness) values in the test target.

Information about the fading characteristics of the product is provided in three ways:

1) You can visually assess the fading. The target images reproduced in this report are digitally reconstructed from the spectrally measured color data rather than scanning or otherwise reproducing the physical print by conventional techniques. This method ensures a colorimetrically accurate representation of the print appearance as the print fades. A calibrated monitor is recommended to experience the best possible reproduction of the test sample appearance. The side-by-side “before and after” presentation of the target images simulates looking at a perfect copy of the unexposed original print along side the same print after light exposure. You can also use Adobe Reader’s full screen mode to cycle through the pages and “animate” the fading.

2) I* Color and tonal accuracy scores are reported. This report includes I* metric scores that compare the color and tonal relationships of the light exposed samples to the color and tonal relationships existing in the original print prior to light exposure. Perfect I* scores of 100% can be approached when no significant fading occurs. Average scores above 90% generally indicate excellent retention of original quality, 80% good, 70% fair, etc., but your conclusions may vary depending on your image quality requirements. I* color rates the retained color accuracy (hue and chroma) while I* tone rates the retained tonal accuracy (lightness and contrast). The score is on a percentile scale where 100% is a perfect match between the comparison image (e.g., “after” light exposure) and the reference image (e.g., “before” any light exposure). 0% I* color means no color accuracy is left. 0% I* tone means essentially no tonality remains and all image information content is lost. Negative I* values have significance as well and contribute to the average I* score when they occur. Negative I* color values mean false color has occurred, for example, when a skin tone turns green or a neutral gray becomes distinctly colorful. Negative I* tone scores mean visual contrast between colors has become inverted (i.e., like the tonal relationships in a photographic film negative). Serious image quality problems must arise before false colors and/or tones appear. For more information on the I* metric, please refer to the AaI&A web site.

3) Color changes are also reported using the classic color difference model, ΔE . Note that ΔE values lose perceptual scaling significance when they become large (e.g., > 15). Also, the ΔE equation does not unambiguously measure changes in image contrast. This limitation is generally not a problem for paints and textiles, but can be a serious oversight when evaluating photographic images. Properly tracking changes in image contrast was a major reason behind the development of the I* metric.

Table to Convert Megalux-hours of Light Exposure to estimated “Years on Display”												
Indoor Light Levels for Print Display		Multiply Mlux-hrs by	Megalux-hours in test									
Light Exposure	Description		10	20	30	40	50	60	70	80	90	100
≤ 10 Lux 24 hours per day	Interior rooms, storage areas, or hallways without windows, illuminated sparingly by artificial lighting	11.4	114	228	342	457	571	685	799	913	1027	1142
50 Lux 12 hours per day	“Museum Standard” display condition	4.6	46	91	137	183	228	274	325	365	411	457
120 Lux 12 hours per day “Kodak Display Years” (1)	Average home illumination level for photos is ~ 60 lux. 90% of all displayed photos do not exceed 120 lux (1).	1.9	19	38	57	76	95	114	133	152	171	190
228 Lux 12 hours per day	Relatively bright home or office. Note the simple 1:1 relationship between “years on display” and Mlux-hr values at this condition.	1.0	10	20	30	40	50	60	70	80	90	100
450 Lux 12 hours per day “WIR Display Years” (2) Also equals 500 lux for 11.8 hours per day	A bright home or commercial office building illumination level is 200-500 lux. Also, good illumination for color critical viewing and color matching tasks begins at about 500 lux.	0.5	5	10	15	20	25	30	35	41	46	51

Light levels commonly encountered in the real world fluctuate widely throughout indoor print display environments and produce large variations in how long it takes for artwork to acquire light-induced damage. Use this table as a guide to estimate how many “years on display” (denoted in red text) it takes to accumulate the light exposure test dosage. Review the test results to decide which Megalux-hour dose has caused fading to your level of concern (e.g., just noticeable, easily noticeable, objectionable, etc.). Then choose the print display description that best represents how your print is likely to be displayed. You may want to obtain a lux meter and make some measurements in your own display environment!

Note that as the years of display time increase, light-induced fading can be eclipsed by other serious aging mechanisms such as fading and/or staining caused by heat, humidity, and air pollutants. Mould damage can also occur at high humidity. Even when colorants remain water fast, direct contact with liquids may result in physical deformation and staining of the substrate. Also, temperature and especially humidity cycling can cause physical cracks and/or flaking, etc. Handling damage such as scratching, abrasion, tears and creases, and catastrophic damage by smoke, fire, flood, etc., also degrade print quality over time. Thus, as illumination levels are reduced other forms of degradation take on greater proportion of risk and may appear in shorter time intervals.

(1) Eastman Kodak cited this exposure condition with a 90% confidence limit as a rationale for estimating print fading times of traditional color photo materials in typical home display environments. For light fading claims regarding its newer line of pigment-based inkjet printers, Kodak adopted the higher level of 450lux/12 hours per day which is also used by Wilhelm Imaging Research, Inc. (See below).

(2) Wilhelm Imaging Research (WIR) standardized its light fastness ratings on 450 lux for 12 hours per day in order to estimate the years on display necessary to reach “easily noticeable” fading. This average daily light exposure dose (at 75 °F/60%RH assumed temperature and humidity levels) used in conjunction with WIR’s visually weighted densitometric endpoint criteria set V3.0 became a de facto industry standard during the first decade of the 21st century in the absence of a published International Standards Organization (ISO) test standard. However, the WIR V3.0 visual criteria set used to predict “easily noticeable fade” was designed for traditional 20th century silver–halide color photofinishing processes. It is not well suited to the evaluation of modern digital media. Nevertheless, the WIR assumed daily light exposure dose is one of many commonly encountered light exposure conditions existing within the range of real world picture display locations.

Sample Description

Sample # AaI_20100913_SN025 **Batch #:** I1a
Printer: Epson Stylus Pro 3880
Ink: Epson OEM UltraChrome K3™ with Vivid Magenta
Media: Kernow Coatings Ltd – Tresco Design 160gsm 50/50 Polyester/Cotton
Coating(s): no additional coating

Test Print Prepared by: AaI&A
Printed: September 16, 2010
Initial Print colors measured September 19, 2010
Test Started: September 19, 2010

Test Image: AaI_StandardColorSet(v2)forSRGB.tif
RIP?/Driver settings: CS5/InDesign, Epson OEM driver ver 6.6./Mac OS 10.6.4, 2880dpi, high speed = 0n, finest details, no color adjustment (NCA)

Media Setting Velvet Fine Art

Profile: AaI_Ep3880_Tresco.icc **Rendering intent:** perceptual
Profile type: custom

Paper White Color (UV-included versus UV-excluded)

Optical Brighteners Present?	L*		a*		b*	
<i>no</i>						
Media Whitepoint Color	UV inc	UV exc	UV inc	UV exc	UV inc	UV exc
	94.5	94.7	-0.5	-0.6	1.0	1.2
	UV-inc/UV-exc ΔL^*, Δa^*, Δb^* respectively					
	0.2		0.1		0.2	
<i>Calculated differences, especially for Δb^*, indicate the role and magnitude of fluorescence on original paper color</i>						
Maximum Printed Black	L*	a*	b*	Optical Density (Dmax)		
	26.4	1.3	2.3	1.31		

Light source: Phillips Colortone F40T12/C50 – 5000·K full spectrum fluorescent. Color rendering Index (CRI) =92), soda lime glass filtered
Light Exposure Cycle: 8 hours on, 4 hours off, twice per 24 hours
CIELAB measurements: D50 2° observer, Xrite Gretag/Macbeth Spectrolino/Spectroscan

Average Illuminance during “on” cycle: **11254 Lux**
Average Temperature: 23.3°C over full test duration, 24.7°C during light exposure.
Average Relative humidity: 56.7%RH over full test duration, 56.5%RH during light exposure.

Description by Kernow Coatings Ltd for Tresco Design

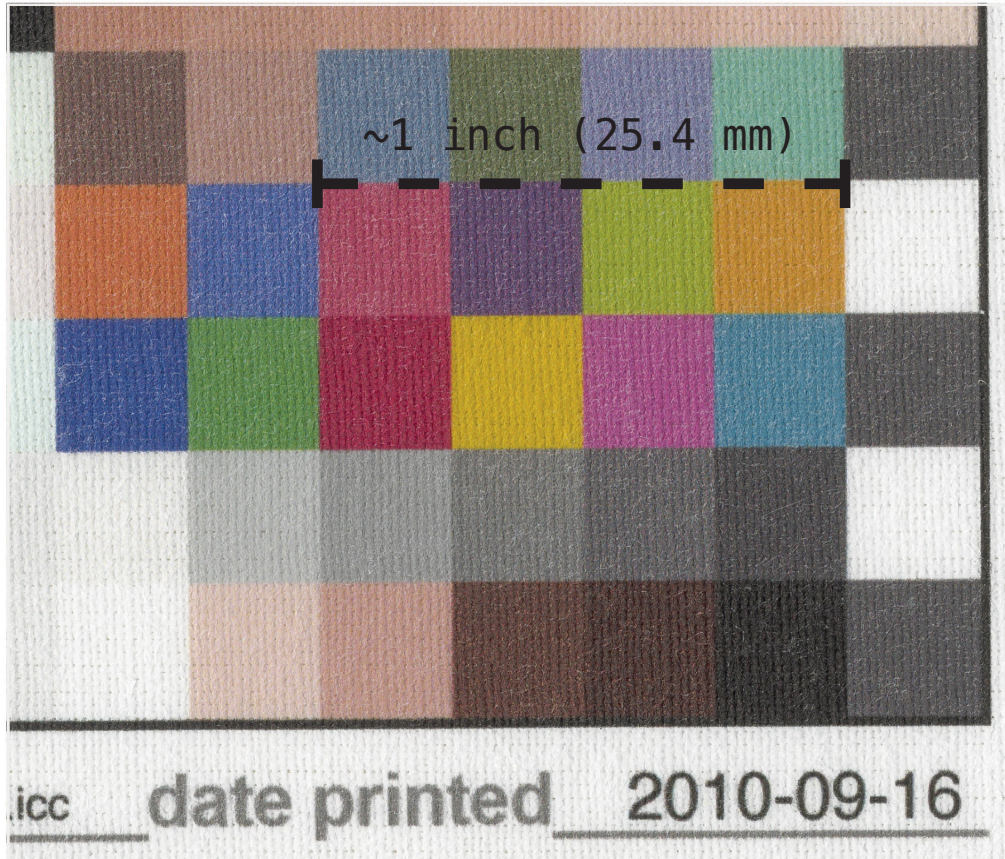
Tresco Design is a 160gsm 50/50 Polyester/Cotton mix, cleaned and bleached, but free of optical brighteners for a natural finish

Uses

Our expectation is that major users will be interior designers and art/craft specialists wanting a pliable, lightweight fabric for many uses, including quilt art.

Notes/Comments:

The Epson Stylus Pro 3880 was used by AaI&A staff to prepare this test sample. It does not have a roll feed option and would therefore not be a typical choice for use with the Kernow Coating Ltd line of fabrics, whereas the other printers in the popular x880 series of Epson professional printers (Epson stylus pro 4880, 7880, and 9880) are ideal for this type of material. Because the Epson K3VM ink set is common to all x880 series of printers these test results should fairly represent the type of lightfastness that can be achieved using any Epson x880 series printer/OEM driver configurations.



Surface texture of Kernow Coatings Ltd – Tresco Design 160gsm 50/50 Polyester/Cotton. Printed with Epson Stylus Pro 3880 and Epson OEM UltraChrome K3™ with Vivid Magenta ink set.

2011-03-24: Kernow Coatings Ltd markets the Tresco Design 160gsm 50/50 Polyester/Cotton and other inkjet printable fabrics under the tradename: “The Kernewek Range of Fine Fabrics”.

The website is: <http://kernewekfinefabrics.com>.

Contact information is:

Kernow Coatings Ltd.
Kernick Rd., Penryn, Cornwall TR10 9DQ
Phone: +44(0)1326 373147
Fax: +44(0)1326 376614
e-mail: kc@sensitisers.com

Notes/Comments:

In the United States, the Kernewek line of fine fabrics is available from:

FreeStyle Photographic Supplies, Inc

800 292-6137

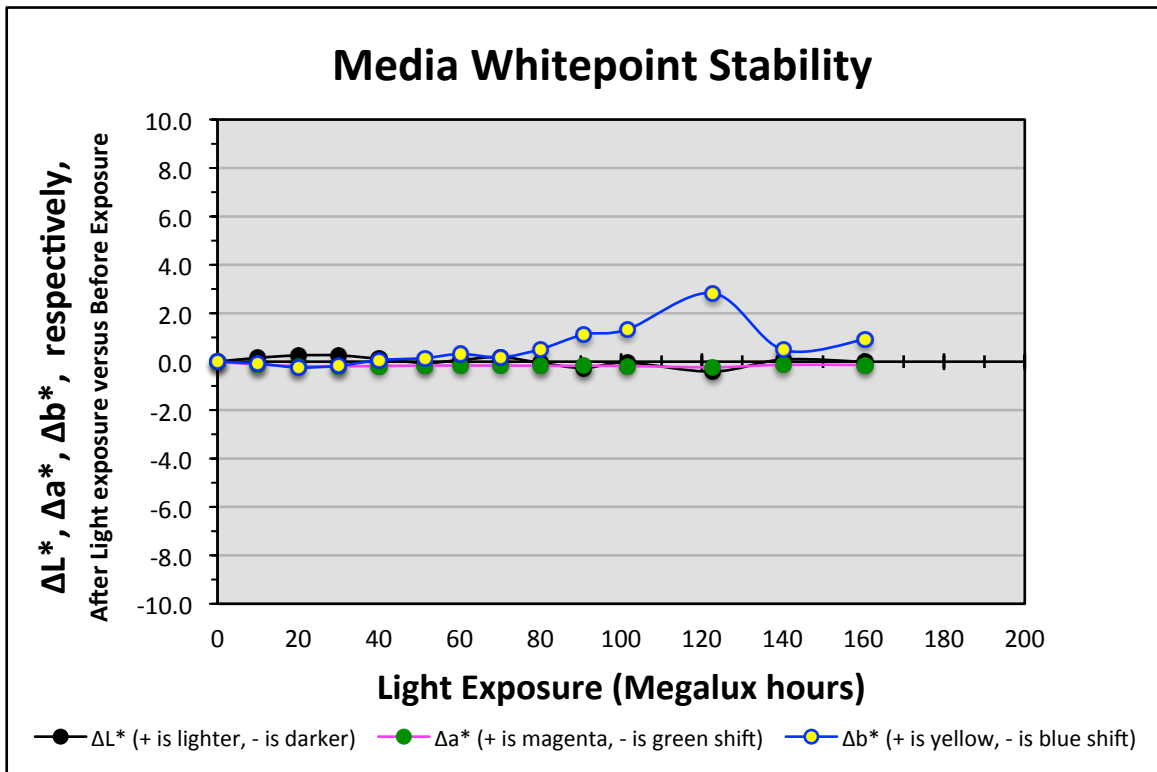
<http://www.FreestylePhoto.biz>

However, Freestyle has renamed the Kernewek line of Fine Fabrics as the "Arista Americana Collection". The renaming key is as follows:

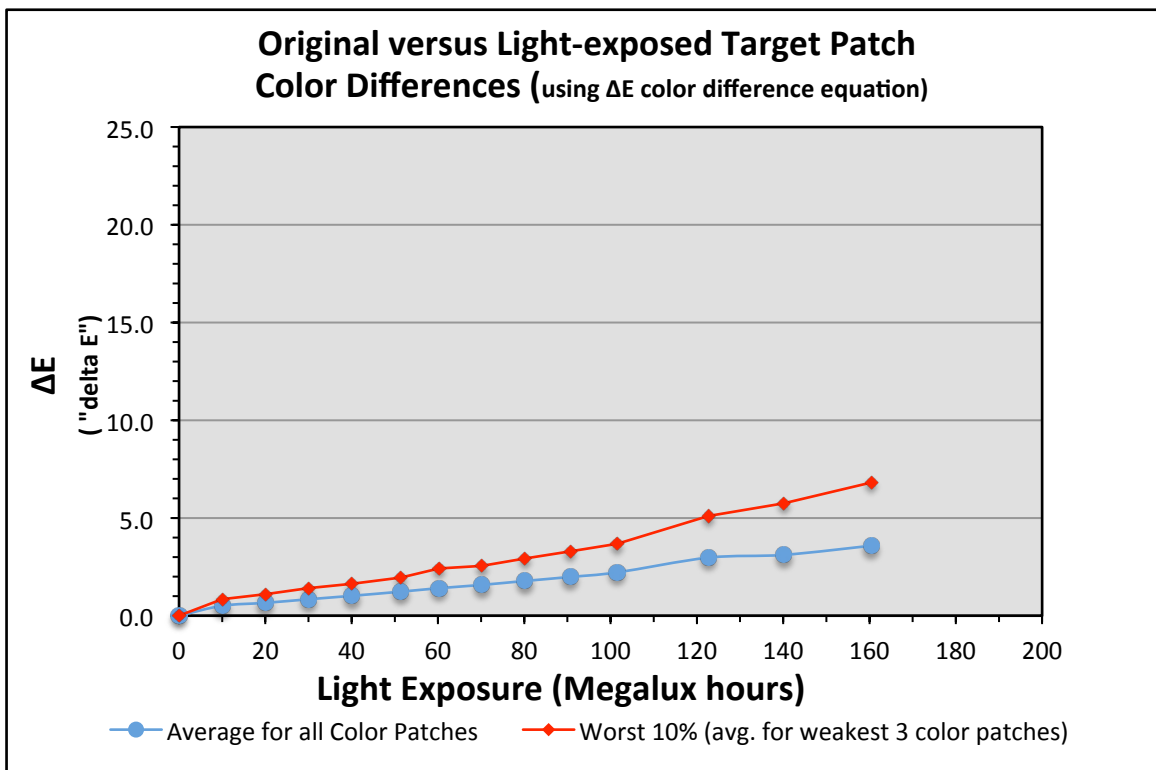
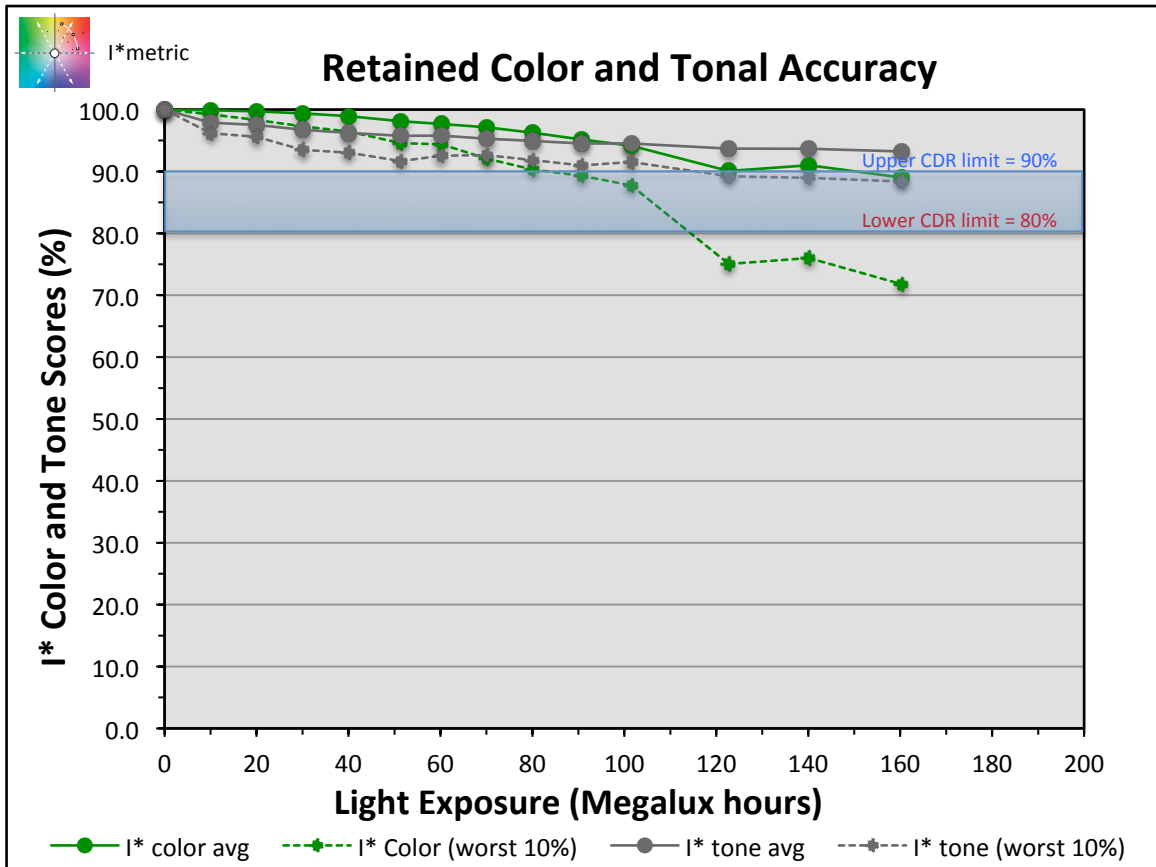
Kernewek	Arista Americana
St Ive's 400gsm =	Monument Valley 400gsm
Newlyn 260gsm =	Yosemite 260gsm
Tresco Design 160gsm =	Rushmore 160gsm
Marazion 260gsm =	Sedona 260gsm
Tintagel 140gsm =	Yellowstone 140gsm

Graphs:

Epson Stylus Pro 3880, Epson OEM UltraChrome K3™ with Vivid Magenta, Kernow Coatings Ltd – Tresco Design 160gsm 50/50 Polyester/Cotton, no additional coating

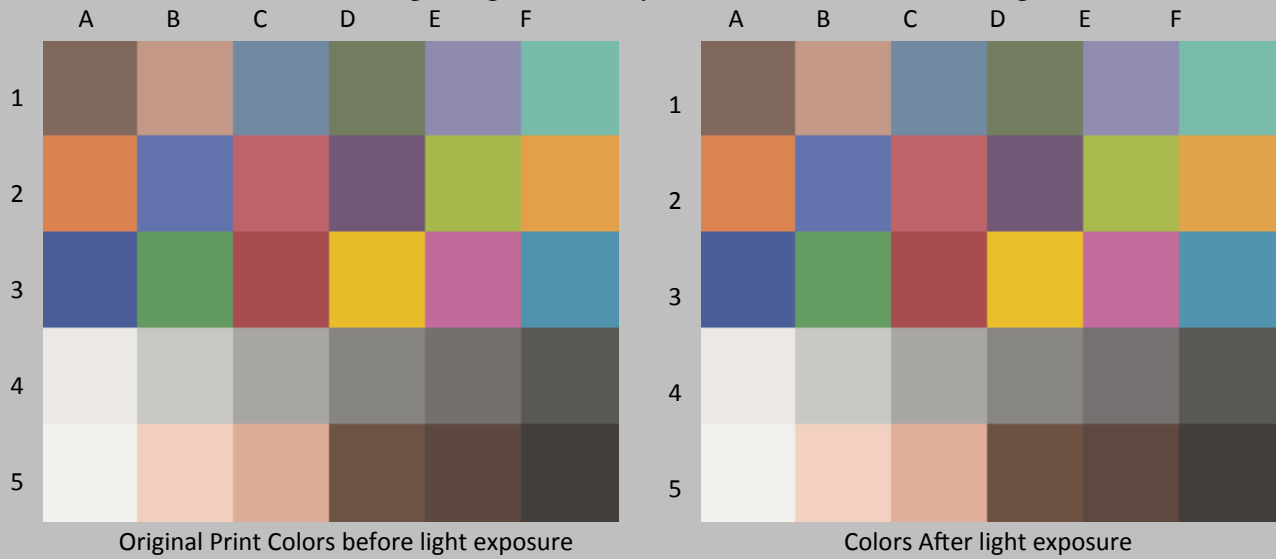


Epson Stylus Pro 3880, Epson OEM UltraChrome K3™ with Vivid Magenta, Kernow Coatings Ltd – Tresco Design 160gsm 50/50 Polyester/Cotton, no additional coating



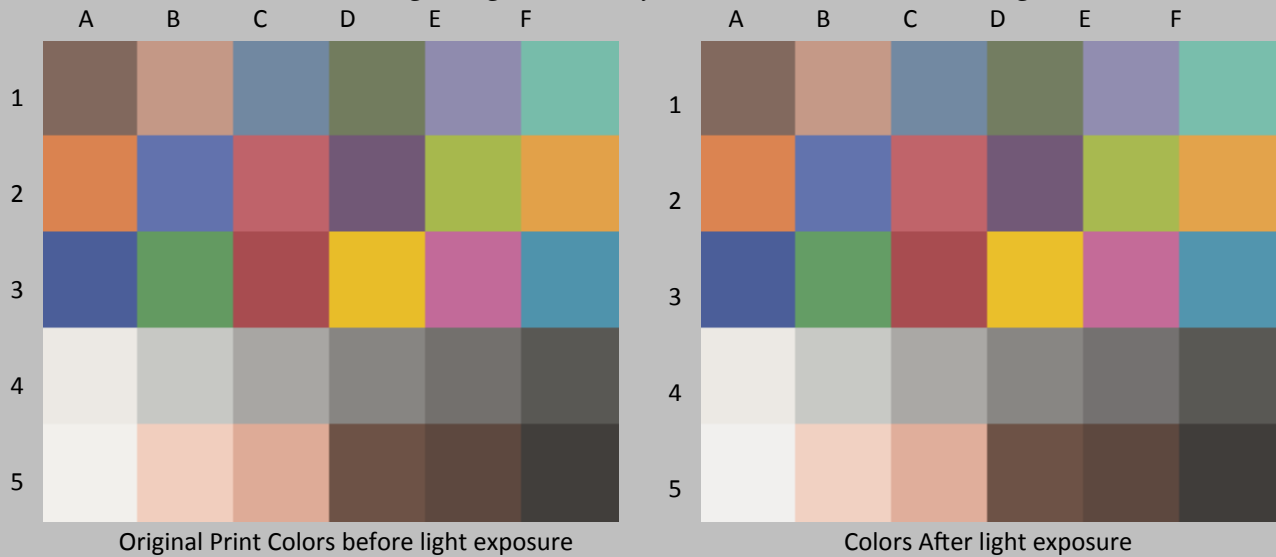
Values:

Epson Stylus Pro 3880, Epson OEM UltraChrome K3™ with Vivid Magenta, Kernow Coatings Ltd – Tresco Design 160gsm 50/50 Polyester/Cotton, no additional coating



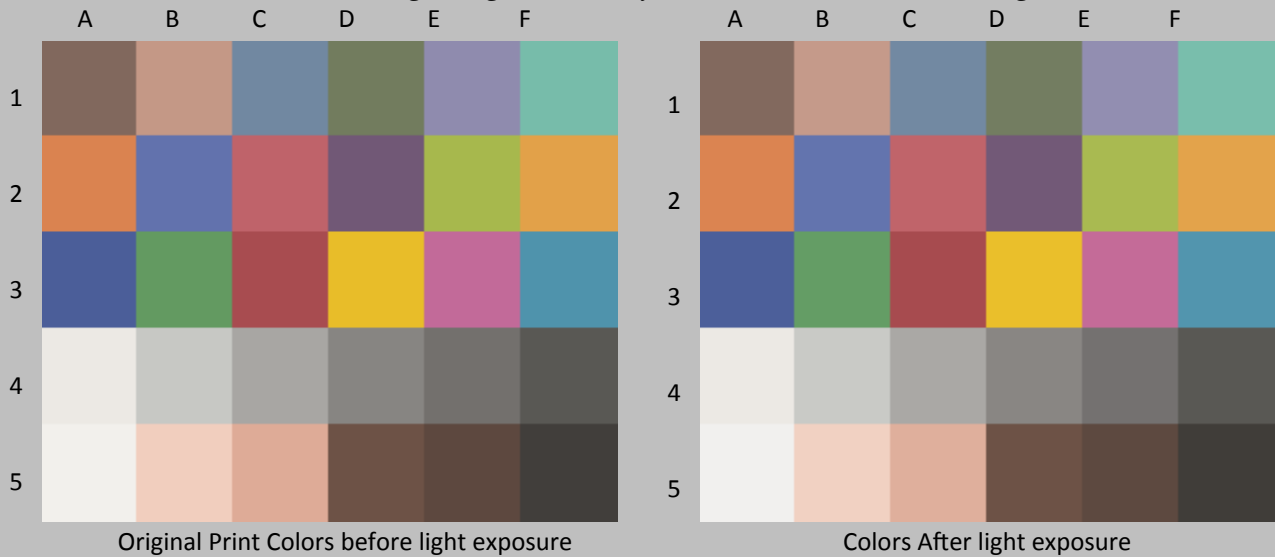
Patch #	Description	I* Color	ΔE	L*		a*		b*		
				Before	After	Before	After	Before	After	
A1	Dark Skin	100.0	0.3	46.2	46.5	9.0	9.0	10.2	10.2	
B1	Light Skin	100.0	0.7	66.6	67.2	15.2	14.9	15.6	15.7	
C1	Blue sky	100.0	0.5	55.5	55.9	-3.7	-3.9	-16.1	-16.0	
D1	Foliage	100.0	0.4	50.6	50.9	-8.1	-8.1	14.7	14.6	
E1	blue flower	100.0	0.7	59.3	59.9	7.1	6.8	-18.5	-18.2	
F1	bluish green	100.0	0.6	71.2	71.8	-25.9	-25.8	2.4	2.1	
A1	orange	100.0	0.6	63.4	63.8	31.3	30.8	42.3	42.2	
B2	purplish blue	99.2	0.9	48.6	49.0	6.2	5.5	-33.9	-33.4	
C2	moderate red	100.0	0.4	53.5	53.7	37.8	37.5	14.0	14.0	
D2	purple	100.0	0.2	40.9	40.9	15.1	15.0	-13.1	-12.9	
E2	yellow green	100.0	0.5	71.8	72.3	-16.8	-16.9	50.6	50.7	
F2	orange yellow	99.8	0.8	71.5	72.0	18.8	18.2	54.2	54.4	
A3	blue	99.4	0.8	40.3	40.5	6.4	5.8	-35.4	-35.1	
B3	green	100.0	0.4	59.0	59.3	-27.9	-28.0	23.8	23.6	
C3	red	100.0	0.2	44.6	44.6	39.4	39.2	17.4	17.3	
D3	yellow	99.9	0.7	79.0	79.3	6.5	5.9	73.2	73.3	
E3	magenta	99.8	0.7	56.4	56.8	39.9	39.7	-9.2	-8.6	
F3	cyan	100.0	0.6	57.2	57.8	-16.8	-17.0	-19.8	-19.8	
A4	white	100.0	0.4	92.4	92.6	0.4	0.2	3.2	2.9	
B4	neutral 8	100.0	0.6	80.3	80.9	-0.6	-0.7	2.3	2.3	
C4	neutral 6.5	100.0	0.5	68.3	68.7	-0.3	-0.4	1.8	1.9	
D4	neutral 5	100.0	0.4	55.7	56.1	0.5	0.5	2.2	2.3	
E4	neutral 3.5	100.0	0.3	47.5	47.8	0.9	0.8	1.5	1.5	
F4	black	100.0	0.1	37.2	37.3	-0.1	-0.1	1.9	1.9	
A5	paper white	100.0	0.2	94.8	95.0	0.4	0.2	1.6	1.5	
B5	Skin highlight L*=88	99.1	0.8	85.7	86.1	10.9	10.3	12.8	12.7	
C5	Skin highlight L* =75	100.0	0.8	74.6	75.2	17.3	16.8	17.6	17.6	
D5	Skin shadow L*=28	100.0	0.2	37.7	37.8	10.1	10.1	12.3	12.5	
E5	Skin shadow L*=13	100.0	0.5	32.6	33.0	8.2	8.2	8.8	9.2	
F5	Maximum Black	100.0	0.5	26.4	25.9	1.3	1.2	2.3	2.4	
Summary Results		I* Color	I* tone	ΔE	10 Megalux hours					
Average Score for all patches		99.9	97.9	0.5						
Worst 10% (3 lowest scoring patches)		99.2	96.2	0.8						

Epson Stylus Pro 3880, Epson OEM UltraChrome K3™ with Vivid Magenta, Kernow Coatings Ltd – Tresco Design 160gsm 50/50 Polyester/Cotton, no additional coating



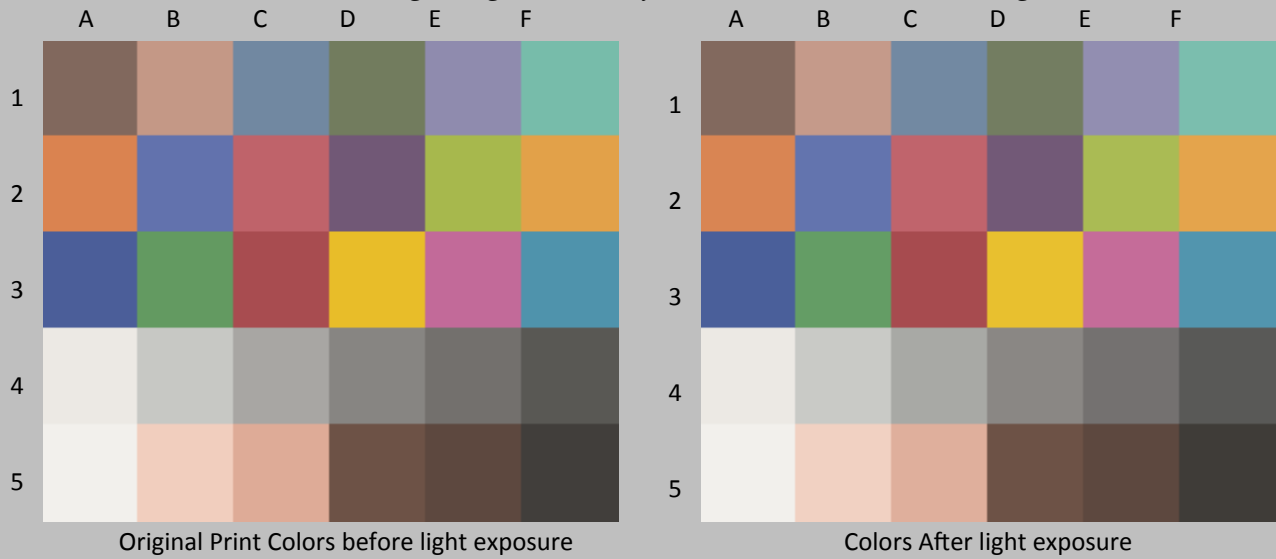
Patch #	Description	I* Color	ΔE	L*		a*		b*	
				Before	After	Before	After	Before	After
A1	Dark Skin	100.0	0.5	46.2	46.6	9.0	9.0	10.2	10.1
B1	Light Skin	100.0	0.7	66.6	67.3	15.2	15.0	15.6	15.6
C1	Blue sky	100.0	0.7	55.5	56.1	-3.7	-4.0	-16.1	-15.9
D1	Foliage	100.0	0.4	50.6	50.9	-8.1	-8.1	14.7	14.5
E1	blue flower	100.0	0.9	59.3	60.0	7.1	6.9	-18.5	-18.1
F1	bluish green	99.8	0.9	71.2	72.0	-25.9	-25.7	2.4	1.9
A2	orange	99.8	0.8	63.4	63.9	31.3	30.8	42.3	42.0
B2	purplish blue	98.9	1.0	48.6	49.1	6.2	5.4	-33.9	-33.4
C2	moderate red	100.0	0.4	53.5	53.8	37.8	37.6	14.0	13.8
D2	purple	100.0	0.3	40.9	41.0	15.1	15.1	-13.1	-12.8
E2	yellow green	100.0	0.7	71.8	72.3	-16.8	-16.9	50.6	50.2
F2	orange yellow	99.5	1.0	71.5	72.1	18.8	18.0	54.2	54.2
A3	blue	99.2	0.8	40.3	40.4	6.4	5.7	-35.4	-35.1
B3	green	99.6	0.8	59.0	59.4	-27.9	-27.8	23.8	23.2
C3	red	100.0	0.2	44.6	44.5	39.4	39.3	17.4	17.2
D3	yellow	99.6	0.9	79.0	79.5	6.5	5.7	73.2	73.1
E3	magenta	99.6	0.8	56.4	56.9	39.9	39.9	-9.2	-8.5
F3	cyan	100.0	0.7	57.2	57.9	-16.8	-17.1	-19.8	-19.7
A4	white	100.0	0.5	92.4	92.7	0.4	0.2	3.2	2.8
B4	neutral 8	100.0	0.7	80.3	81.0	-0.6	-0.6	2.3	2.3
C4	neutral 6.5	100.0	0.8	68.3	69.0	-0.3	-0.5	1.8	2.0
D4	neutral 5	100.0	0.4	55.7	56.1	0.5	0.5	2.2	2.3
E4	neutral 3.5	100.0	0.5	47.5	47.9	0.9	0.7	1.5	1.3
F4	black	100.0	0.2	37.2	37.2	-0.1	-0.1	1.9	1.8
A5	paper white	100.0	0.4	94.8	95.1	0.4	0.2	1.6	1.4
B5	Skin highlight L*=88	97.3	1.1	85.7	86.2	10.9	10.1	12.8	12.3
C5	Skin highlight L* =75	98.9	1.2	74.6	75.4	17.3	16.6	17.6	17.3
D5	Skin shadow L*=28	100.0	0.2	37.7	37.8	10.1	10.3	12.3	12.4
E5	Skin shadow L*=13	99.3	0.6	32.6	32.7	8.2	8.3	8.8	9.4
F5	Maximum Black	100.0	0.7	26.4	25.7	1.3	1.1	2.3	2.5
Summary Results		I* Color	I* tone	ΔE	20 Megalux hours				
Average Score for all patches		99.7	97.5	0.7					
Worst 10% (3 lowest scoring patches)		98.3	95.6	1.1					

Epson Stylus Pro 3880, Epson OEM UltraChrome K3™ with Vivid Magenta, Kernow Coatings Ltd – Tresco Design 160gsm 50/50 Polyester/Cotton, no additional coating



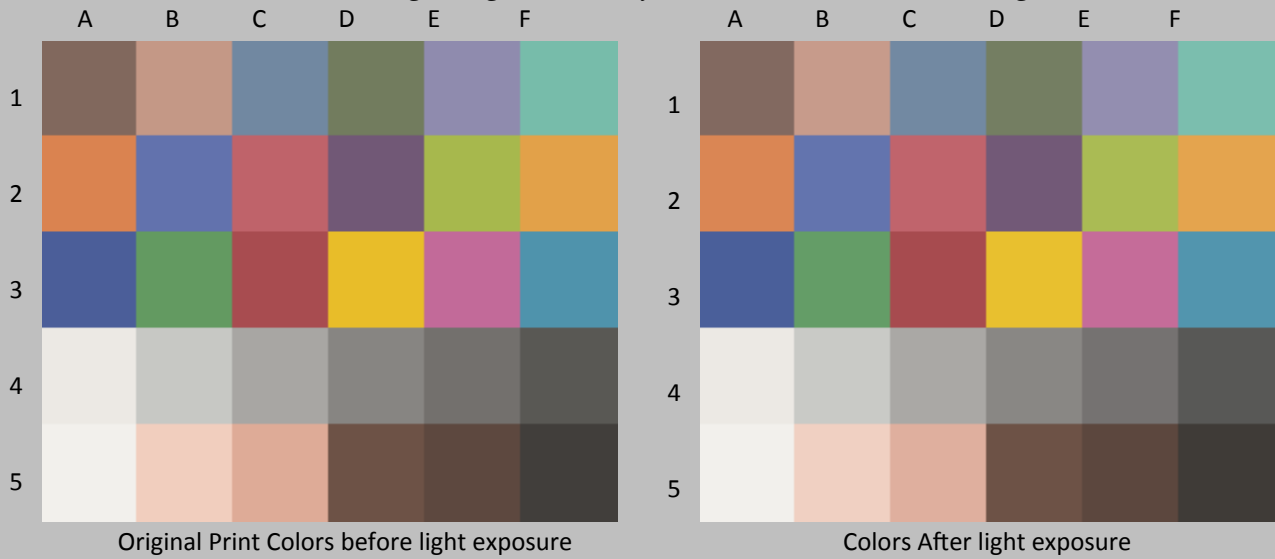
Patch #	Description	I* Color	ΔE	L*		a*		b*		
				Before	After	Before	After	Before	After	
A1	Dark Skin	100.0	0.6	46.2	46.7	9.0	9.1	10.2	9.9	
B1	Light Skin	100.0	1.1	66.6	67.6	15.2	14.9	15.6	15.3	
C1	Blue sky	100.0	0.9	55.5	56.3	-3.7	-3.9	-16.1	-15.8	
D1	Foliage	99.6	0.8	50.6	51.1	-8.1	-8.0	14.7	14.2	
E1	blue flower	99.0	1.2	59.3	60.3	7.1	6.9	-18.5	-17.8	
F1	bluish green	98.6	1.2	71.2	72.1	-25.9	-25.6	2.4	1.6	
A1	orange	99.2	1.1	63.4	64.0	31.3	30.6	42.3	41.7	
B2	purplish blue	98.0	1.4	48.6	49.3	6.2	5.3	-33.9	-33.1	
C2	moderate red	100.0	0.5	53.5	53.8	37.8	37.9	14.0	13.6	
D2	purple	100.0	0.3	40.9	41.1	15.1	15.2	-13.1	-12.9	
E2	yellow green	99.9	1.0	71.8	72.6	-16.8	-16.9	50.6	50.1	
F2	orange yellow	99.4	1.1	71.5	72.2	18.8	18.0	54.2	54.1	
A3	blue	98.7	1.0	40.3	40.7	6.4	5.6	-35.4	-35.0	
B3	green	98.7	1.2	59.0	59.7	-27.9	-27.7	23.8	22.8	
C3	red	100.0	0.4	44.6	44.5	39.4	39.3	17.4	17.1	
D3	yellow	99.4	1.1	79.0	79.6	6.5	5.6	73.2	72.8	
E3	magenta	99.0	1.1	56.4	57.0	39.9	39.8	-9.2	-8.3	
F3	cyan	100.0	0.8	57.2	57.9	-16.8	-17.1	-19.8	-19.7	
A4	white	100.0	0.4	92.4	92.7	0.4	0.2	3.2	2.9	
B4	neutral 8	100.0	0.8	80.3	81.1	-0.6	-0.7	2.3	2.3	
C4	neutral 6.5	100.0	0.8	68.3	69.0	-0.3	-0.5	1.8	2.0	
D4	neutral 5	100.0	0.6	55.7	56.2	0.5	0.5	2.2	2.2	
E4	neutral 3.5	100.0	0.6	47.5	48.0	0.9	0.8	1.5	1.2	
F4	black	100.0	0.4	37.2	37.2	-0.1	-0.1	1.9	1.6	
A5	paper white	100.0	0.4	94.8	95.1	0.4	0.2	1.6	1.4	
B5	Skin highlight L*=88	96.2	1.3	85.7	86.3	10.9	10.1	12.8	12.0	
C5	Skin highlight L* =75	97.6	1.5	74.6	75.6	17.3	16.4	17.6	16.9	
D5	Skin shadow L*=28	100.0	0.3	37.7	37.8	10.1	10.3	12.3	12.4	
E5	Skin shadow L*=13	98.3	0.8	32.6	32.9	8.2	8.4	8.8	9.5	
F5	Maximum Black	100.0	0.7	26.4	25.7	1.3	1.1	2.3	2.5	
Summary Results		I* Color	I* tone	ΔE	30 Megalux hours					
Average Score for all patches		99.4	96.7	0.8						
Worst 10% (3 lowest scoring patches)		97.3	93.5	1.4						

Epson Stylus Pro 3880, Epson OEM UltraChrome K3™ with Vivid Magenta, Kernow Coatings Ltd – Tresco Design 160gsm 50/50 Polyester/Cotton, no additional coating



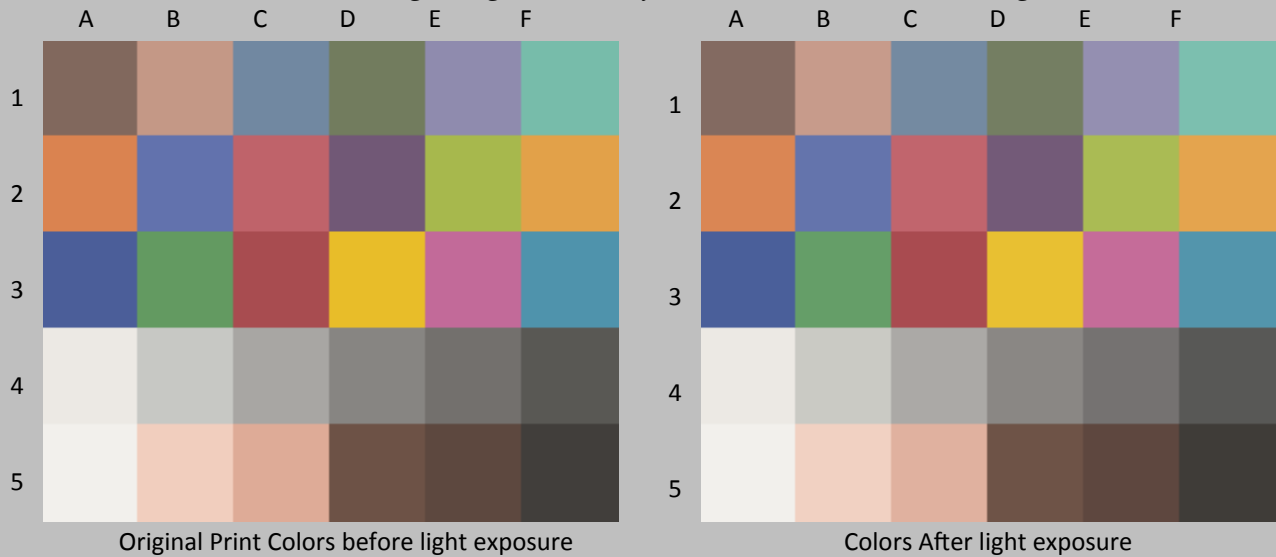
Patch #	Description	I* Color	ΔE	L*		a*		b*		
				Before	After	Before	After	Before	After	
A1	Dark Skin	99.1	0.8	46.2	46.8	9.0	9.2	10.2	9.6	
B1	Light Skin	99.0	1.3	66.6	67.6	15.2	14.8	15.6	15.0	
C1	Blue sky	99.7	0.9	55.5	56.2	-3.7	-4.0	-16.1	-15.7	
D1	Foliage	99.2	0.7	50.6	50.8	-8.1	-8.0	14.7	14.1	
E1	blue flower	98.1	1.3	59.3	60.3	7.1	6.9	-18.5	-17.6	
F1	bluish green	97.3	1.6	71.2	72.2	-25.9	-25.3	2.4	1.3	
A1	orange	98.3	1.6	63.4	64.1	31.3	30.5	42.3	41.2	
B2	purplish blue	97.3	1.7	48.6	49.4	6.2	5.1	-33.9	-32.9	
C2	moderate red	99.6	0.7	53.5	53.8	37.8	38.0	14.0	13.4	
D2	purple	100.0	0.4	40.9	41.1	15.1	15.3	-13.1	-13.0	
E2	yellow green	98.7	1.5	71.8	72.8	-16.8	-16.9	50.6	49.5	
F2	orange yellow	98.8	1.5	71.5	72.4	18.8	17.7	54.2	53.7	
A3	blue	98.1	1.3	40.3	40.9	6.4	5.4	-35.4	-34.7	
B3	green	97.9	1.4	59.0	59.6	-27.9	-27.9	23.8	22.5	
C3	red	100.0	0.5	44.6	44.4	39.4	39.4	17.4	16.9	
D3	yellow	98.8	1.5	79.0	79.6	6.5	5.4	73.2	72.3	
E3	magenta	98.3	1.4	56.4	57.2	39.9	39.6	-9.2	-8.0	
F3	cyan	100.0	1.0	57.2	58.0	-16.8	-17.2	-19.8	-19.6	
A4	white	100.0	0.3	92.4	92.7	0.4	0.2	3.2	3.1	
B4	neutral 8	100.0	0.8	80.3	81.1	-0.6	-0.7	2.3	2.4	
C4	neutral 6.5	100.0	0.9	68.3	69.1	-0.3	-0.5	1.8	2.0	
D4	neutral 5	100.0	0.9	55.7	56.5	0.5	0.5	2.2	2.2	
E4	neutral 3.5	99.9	0.7	47.5	48.0	0.9	0.8	1.5	1.0	
F4	black	98.8	0.7	37.2	37.5	-0.1	0.0	1.9	1.3	
A5	paper white	100.0	0.2	94.8	94.9	0.4	0.2	1.6	1.7	
B5	Skin highlight L*=88	95.1	1.4	85.7	86.3	10.9	10.0	12.8	11.9	
C5	Skin highlight L* =75	97.0	1.7	74.6	75.7	17.3	16.4	17.6	16.7	
D5	Skin shadow L*=28	100.0	0.2	37.7	37.8	10.1	10.2	12.3	12.2	
E5	Skin shadow L*=13	99.0	0.7	32.6	32.4	8.2	8.4	8.8	9.4	
F5	Maximum Black	100.0	0.9	26.4	25.5	1.3	1.2	2.3	2.6	
Summary Results		I* Color	I* tone	ΔE	40 Megalux hours					
Average Score for all patches		98.9	96.2	1.0						
Worst 10% (3 lowest scoring patches)		96.5	93.0	1.6						

Epson Stylus Pro 3880, Epson OEM UltraChrome K3™ with Vivid Magenta, Kernow Coatings Ltd – Tresco Design 160gsm 50/50 Polyester/Cotton, no additional coating



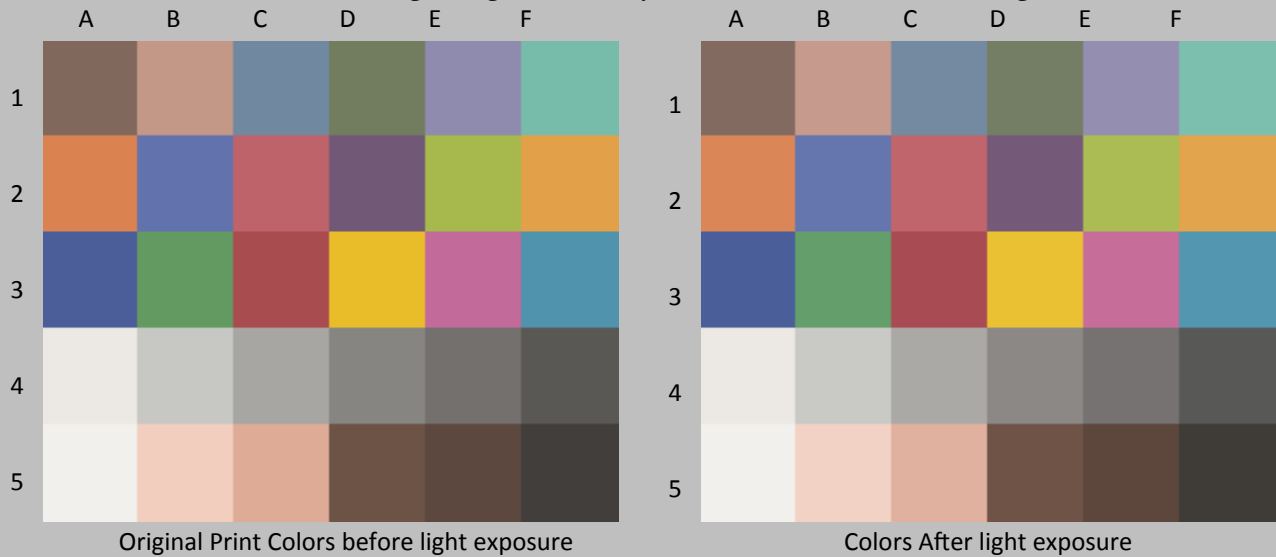
Patch #	Description	I* Color	ΔE	L*		a*		b*		
				Before	After	Before	After	Before	After	
A1	Dark Skin	97.1	1.1	46.2	46.8	9.0	9.3	10.2	9.3	
B1	Light Skin	97.6	1.6	66.6	67.7	15.2	14.8	15.6	14.7	
C1	Blue sky	99.1	1.0	55.5	56.3	-3.7	-4.1	-16.1	-15.6	
D1	Foliage	96.1	1.3	50.6	51.2	-8.1	-7.9	14.7	13.6	
E1	blue flower	97.3	1.6	59.3	60.5	7.1	6.8	-18.5	-17.5	
F1	bluish green	95.6	1.9	71.2	72.2	-25.9	-25.2	2.4	0.9	
A2	orange	97.7	1.9	63.4	64.2	31.3	30.4	42.3	40.8	
B2	purplish blue	96.7	1.9	48.6	49.5	6.2	5.0	-33.9	-32.7	
C2	moderate red	98.9	1.0	53.5	53.9	37.8	38.0	14.0	13.1	
D2	purple	100.0	0.6	40.9	41.3	15.1	15.4	-13.1	-13.2	
E2	yellow green	98.2	1.7	71.8	72.8	-16.8	-17.0	50.6	49.2	
F2	orange yellow	97.8	2.0	71.5	72.4	18.8	17.6	54.2	53.0	
A3	blue	97.6	1.5	40.3	40.9	6.4	5.3	-35.4	-34.6	
B3	green	96.6	1.9	59.0	59.7	-27.9	-27.9	23.8	22.0	
C3	red	99.4	0.8	44.6	44.3	39.4	39.4	17.4	16.7	
D3	yellow	98.2	1.9	79.0	79.6	6.5	5.3	73.2	71.7	
E3	magenta	98.0	1.5	56.4	57.3	39.9	39.5	-9.2	-7.9	
F3	cyan	99.9	1.0	57.2	58.1	-16.8	-17.2	-19.8	-19.5	
A4	white	100.0	0.2	92.4	92.5	0.4	0.2	3.2	3.0	
B4	neutral 8	100.0	0.8	80.3	81.0	-0.6	-0.7	2.3	2.4	
C4	neutral 6.5	100.0	0.9	68.3	69.1	-0.3	-0.5	1.8	2.1	
D4	neutral 5	100.0	0.8	55.7	56.4	0.5	0.5	2.2	2.1	
E4	neutral 3.5	98.7	0.9	47.5	48.1	0.9	0.9	1.5	0.9	
F4	black	96.5	0.8	37.2	37.3	-0.1	0.2	1.9	1.2	
A5	paper white	100.0	0.2	94.8	94.7	0.4	0.2	1.6	1.7	
B5	Skin highlight L*=88	92.8	1.7	85.7	86.0	10.9	9.9	12.8	11.5	
C5	Skin highlight L* =75	95.3	1.9	74.6	75.6	17.3	16.3	17.6	16.3	
D5	Skin shadow L*=28	100.0	0.2	37.7	37.8	10.1	10.3	12.3	12.3	
E5	Skin shadow L*=13	97.9	0.8	32.6	32.3	8.2	8.5	8.8	9.5	
F5	Maximum Black	100.0	1.3	26.4	25.1	1.3	1.1	2.3	2.6	
Summary Results		I* Color	I* tone	ΔE	50 Megalux hours					
Average Score for all patches		98.1	95.8	1.2						
Worst 10% (3 lowest scoring patches)		94.6	91.7	2.0						

Epson Stylus Pro 3880, Epson OEM UltraChrome K3™ with Vivid Magenta, Kernow Coatings Ltd – Tresco Design 160gsm 50/50 Polyester/Cotton, no additional coating



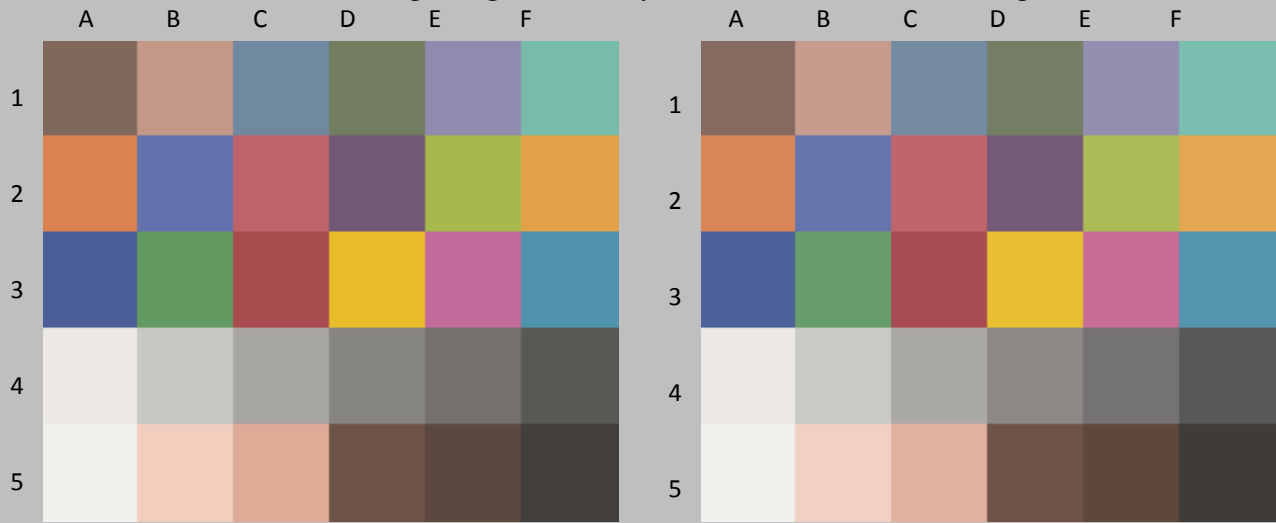
Patch #	Description	I* Color	ΔE	L*		a*		b*		
				Before	After	Before	After	Before	After	
A1	Dark Skin	96.1	1.3	46.2	47.0	9.0	9.4	10.2	9.2	
B1	Light Skin	97.9	1.6	66.6	67.8	15.2	14.9	15.6	14.7	
C1	Blue sky	98.4	1.3	55.5	56.6	-3.7	-4.0	-16.1	-15.4	
D1	Foliage	95.4	1.5	50.6	51.4	-8.1	-7.7	14.7	13.5	
E1	blue flower	95.6	2.0	59.3	60.7	7.1	6.8	-18.5	-17.1	
F1	bluish green	94.9	2.2	71.2	72.4	-25.9	-24.9	2.4	0.8	
A1	orange	97.1	2.2	63.4	64.2	31.3	30.5	42.3	40.5	
B2	purplish blue	96.4	2.0	48.6	49.6	6.2	5.0	-33.9	-32.5	
C2	moderate red	98.7	1.2	53.5	54.1	37.8	37.9	14.0	13.0	
D2	purple	100.0	0.7	40.9	41.5	15.1	15.4	-13.1	-13.0	
E2	yellow green	97.4	2.2	71.8	73.0	-16.8	-16.7	50.6	48.7	
F2	orange yellow	97.3	2.3	71.5	72.5	18.8	17.5	54.2	52.6	
A3	blue	97.5	1.5	40.3	40.8	6.4	5.3	-35.4	-34.6	
B3	green	95.7	2.2	59.0	59.8	-27.9	-27.6	23.8	21.7	
C3	red	99.1	0.9	44.6	44.6	39.4	39.6	17.4	16.6	
D3	yellow	97.1	2.7	79.0	79.7	6.5	5.3	73.2	70.8	
E3	magenta	97.5	1.8	56.4	57.4	39.9	39.6	-9.2	-7.7	
F3	cyan	100.0	1.2	57.2	58.2	-16.8	-17.1	-19.8	-19.4	
A4	white	100.0	0.2	92.4	92.6	0.4	0.2	3.2	3.1	
B4	neutral 8	100.0	0.9	80.3	81.2	-0.6	-0.6	2.3	2.5	
C4	neutral 6.5	100.0	1.1	68.3	69.3	-0.3	-0.5	1.8	2.2	
D4	neutral 5	100.0	1.0	55.7	56.6	0.5	0.6	2.2	2.1	
E4	neutral 3.5	97.4	1.0	47.5	48.2	0.9	0.9	1.5	0.8	
F4	black	94.5	1.0	37.2	37.3	-0.1	0.2	1.9	1.0	
A5	paper white	100.0	0.4	94.8	94.9	0.4	0.2	1.6	1.9	
B5	Skin highlight L*=88	93.8	1.6	85.7	86.1	10.9	10.0	12.8	11.6	
C5	Skin highlight L* =75	95.2	2.2	74.6	75.9	17.3	16.3	17.6	16.2	
D5	Skin shadow L*=28	100.0	0.4	37.7	37.9	10.1	10.4	12.3	12.1	
E5	Skin shadow L*=13	97.5	0.8	32.6	32.5	8.2	8.6	8.8	9.5	
F5	Maximum Black	100.0	1.0	26.4	25.4	1.3	1.1	2.3	2.6	
Summary Results		I* Color	I* tone	ΔE	60 Megalux hours					
Average Score for all patches		97.7	95.8	1.4						
Worst 10% (3 lowest scoring patches)		94.4	92.5	2.4						

Epson Stylus Pro 3880, Epson OEM UltraChrome K3™ with Vivid Magenta, Kernow Coatings Ltd – Tresco Design 160gsm 50/50 Polyester/Cotton, no additional coating



Patch #	Description	I* Color	ΔE	L*		a*		b*		
				Before	After	Before	After	Before	After	
A1	Dark Skin	94.4	1.6	46.2	47.2	9.0	9.5	10.2	9.0	
B1	Light Skin	96.8	1.9	66.6	68.0	15.2	14.9	15.6	14.5	
C1	Blue sky	98.3	1.4	55.5	56.6	-3.7	-4.0	-16.1	-15.4	
D1	Foliage	95.0	1.5	50.6	51.2	-8.1	-7.8	14.7	13.4	
E1	blue flower	95.6	2.0	59.3	60.7	7.1	7.1	-18.5	-17.1	
F1	bluish green	93.7	2.6	71.2	72.7	-25.9	-24.8	2.4	0.6	
A1	orange	96.7	2.5	63.4	64.4	31.3	30.5	42.3	40.2	
B2	purplish blue	96.4	2.1	48.6	49.7	6.2	5.1	-33.9	-32.5	
C2	moderate red	98.0	1.5	53.5	54.2	37.8	38.1	14.0	12.7	
D2	purple	99.9	0.8	40.9	41.4	15.1	15.5	-13.1	-13.3	
E2	yellow green	97.2	2.4	71.8	73.1	-16.8	-16.7	50.6	48.7	
F2	orange yellow	97.3	2.3	71.5	72.7	18.8	17.5	54.2	52.7	
A3	blue	97.5	1.5	40.3	41.0	6.4	5.3	-35.4	-34.6	
B3	green	94.9	2.5	59.0	59.8	-27.9	-27.7	23.8	21.4	
C3	red	98.6	1.1	44.6	44.7	39.4	39.7	17.4	16.4	
D3	yellow	97.8	2.3	79.0	79.9	6.5	5.2	73.2	71.5	
E3	magenta	97.5	1.9	56.4	57.6	39.9	39.7	-9.2	-7.7	
F3	cyan	99.7	1.2	57.2	58.3	-16.8	-17.3	-19.8	-19.6	
A4	white	100.0	0.4	92.4	92.7	0.4	0.2	3.2	3.0	
B4	neutral 8	100.0	1.1	80.3	81.4	-0.6	-0.6	2.3	2.5	
C4	neutral 6.5	100.0	1.3	68.3	69.4	-0.3	-0.5	1.8	2.2	
D4	neutral 5	100.0	1.2	55.7	56.8	0.5	0.6	2.2	2.1	
E4	neutral 3.5	95.6	1.2	47.5	48.3	0.9	0.9	1.5	0.6	
F4	black	92.2	1.3	37.2	37.4	-0.1	0.3	1.9	0.8	
A5	paper white	100.0	0.3	94.8	95.0	0.4	0.2	1.6	1.8	
B5	Skin highlight L*=88	90.4	2.3	85.7	86.5	10.9	9.9	12.8	11.0	
C5	Skin highlight L* =75	93.7	2.5	74.6	76.1	17.3	16.3	17.6	15.8	
D5	Skin shadow L*=28	99.8	0.6	37.7	37.9	10.1	10.5	12.3	12.0	
E5	Skin shadow L*=13	97.0	0.9	32.6	32.3	8.2	8.6	8.8	9.5	
F5	Maximum Black	100.0	1.2	26.4	25.2	1.3	1.1	2.3	2.6	
Summary Results		I* Color	I* tone	ΔE	70 Megalux hours					
Average Score for all patches		97.1	95.3	1.6						
Worst 10% (3 lowest scoring patches)		92.1	92.6	2.6						

Epson Stylus Pro 3880, Epson OEM UltraChrome K3™ with Vivid Magenta, Kernow Coatings Ltd – Tresco Design 160gsm 50/50 Polyester/Cotton, no additional coating

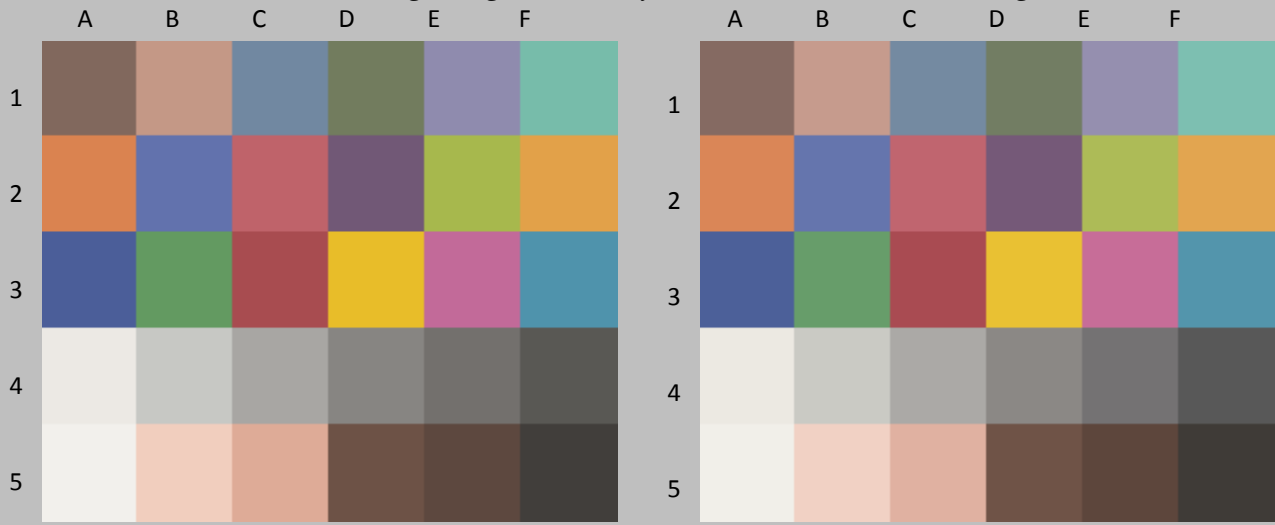


Original Print Colors before light exposure

Colors After light exposure

Patch #	Description	I* Color	ΔE	L*		a*		b*		
				Before	After	Before	After	Before	After	
A1	Dark Skin	92.3	1.9	46.2	47.3	9.0	9.5	10.2	8.7	
B1	Light Skin	95.4	2.1	66.6	68.1	15.2	14.9	15.6	14.1	
C1	Blue sky	97.4	1.5	55.5	56.7	-3.7	-4.1	-16.1	-15.2	
D1	Foliage	92.9	1.8	50.6	51.3	-8.1	-7.7	14.7	13.1	
E1	blue flower	94.3	2.2	59.3	60.8	7.1	7.0	-18.5	-16.9	
F1	bluish green	92.8	2.8	71.2	72.7	-25.9	-24.6	2.4	0.4	
A1	orange	95.9	2.9	63.4	64.5	31.3	30.4	42.3	39.8	
B2	purplish blue	95.6	2.3	48.6	49.8	6.2	4.9	-33.9	-32.3	
C2	moderate red	97.5	1.7	53.5	54.3	37.8	38.1	14.0	12.5	
D2	purple	99.1	0.9	40.9	41.4	15.1	15.7	-13.1	-13.3	
E2	yellow green	96.6	2.7	71.8	73.2	-16.8	-16.7	50.6	48.3	
F2	orange yellow	96.4	2.9	71.5	72.8	18.8	17.4	54.2	52.0	
A3	blue	96.6	1.9	40.3	41.1	6.4	5.0	-35.4	-34.3	
B3	green	93.5	3.0	59.0	59.9	-27.9	-27.4	23.8	20.9	
C3	red	98.1	1.3	44.6	44.7	39.4	39.7	17.4	16.2	
D3	yellow	97.6	2.4	79.0	79.8	6.5	5.2	73.2	71.3	
E3	magenta	97.0	2.1	56.4	57.6	39.9	39.7	-9.2	-7.4	
F3	cyan	99.1	1.3	57.2	58.2	-16.8	-17.4	-19.8	-19.4	
A4	white	100.0	0.4	92.4	92.6	0.4	0.3	3.2	3.4	
B4	neutral 8	100.0	1.1	80.3	81.3	-0.6	-0.6	2.3	2.6	
C4	neutral 6.5	100.0	1.2	68.3	69.4	-0.3	-0.5	1.8	2.2	
D4	neutral 5	100.0	1.3	55.7	56.9	0.5	0.6	2.2	2.1	
E4	neutral 3.5	93.9	1.3	47.5	48.2	0.9	0.8	1.5	0.5	
F4	black	89.2	1.5	37.2	37.4	-0.1	0.3	1.9	0.5	
A5	paper white	99.5	0.5	94.8	94.7	0.4	0.2	1.6	2.1	
B5	Skin highlight L*=88	89.4	2.4	85.7	86.5	10.9	9.9	12.8	10.8	
C5	Skin highlight L* =75	92.7	2.8	74.6	76.1	17.3	16.2	17.6	15.6	
D5	Skin shadow L*=28	98.4	0.8	37.7	37.9	10.1	10.7	12.3	11.8	
E5	Skin shadow L*=13	96.5	0.9	32.6	32.7	8.2	8.7	8.8	9.5	
F5	Maximum Black	100.0	1.3	26.4	25.1	1.3	1.1	2.3	2.6	
Summary Results		I* Color	I* tone	ΔE	80 Megalux hours					
Average Score for all patches		96.3	94.9	1.8						
Worst 10% (3 lowest scoring patches)		90.3	91.8	2.9						

Epson Stylus Pro 3880, Epson OEM UltraChrome K3™ with Vivid Magenta, Kernow Coatings Ltd – Tresco Design 160gsm 50/50 Polyester/Cotton, no additional coating

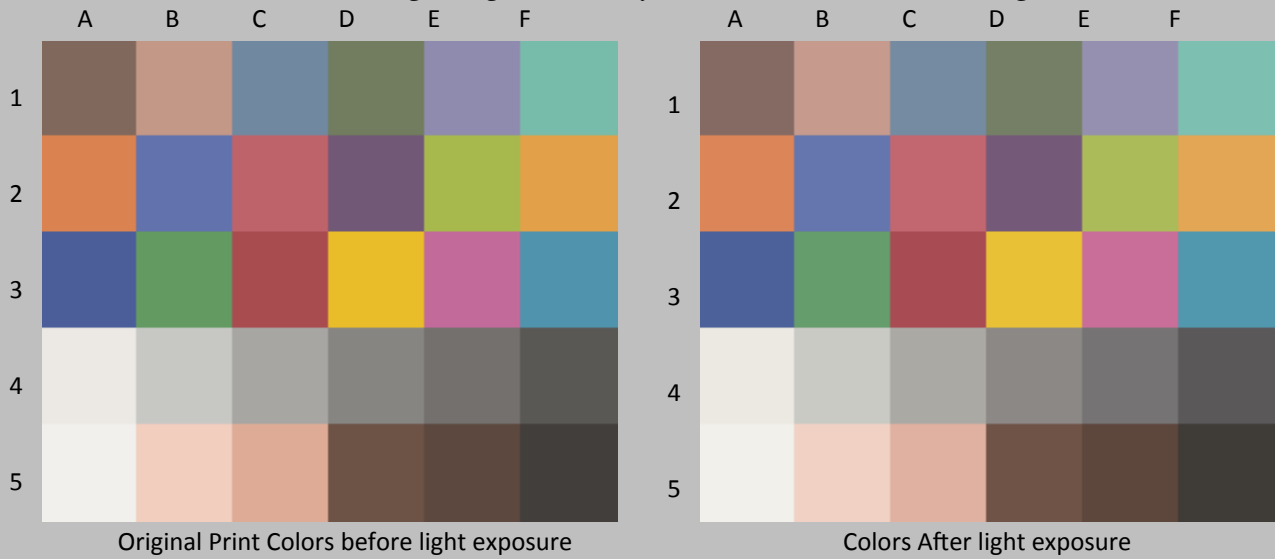


Original Print Colors before light exposure

Colors After light exposure

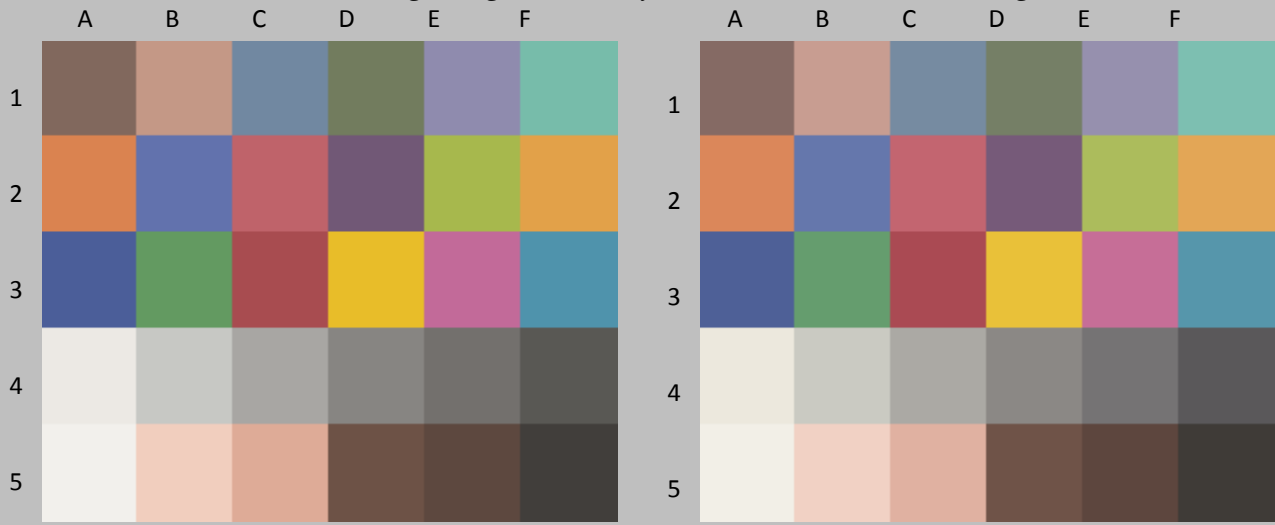
Patch #	Description	I* Color	ΔE	L*		a*		b*		
				Before	After	Before	After	Before	After	
A1	Dark Skin	90.9	2.1	46.2	47.3	9.0	9.6	10.2	8.5	
B1	Light Skin	94.7	2.2	66.6	68.0	15.2	14.9	15.6	14.0	
C1	Blue sky	95.9	1.6	55.5	56.7	-3.7	-4.1	-16.1	-15.0	
D1	Foliage	92.1	1.9	50.6	51.1	-8.1	-7.7	14.7	13.0	
E1	blue flower	91.8	2.6	59.3	60.8	7.1	7.0	-18.5	-16.4	
F1	bluish green	92.1	3.0	71.2	72.7	-25.9	-24.5	2.4	0.3	
A1	orange	95.2	3.2	63.4	64.5	31.3	30.4	42.3	39.4	
B2	purplish blue	94.6	2.7	48.6	49.8	6.2	4.8	-33.9	-31.9	
C2	moderate red	97.0	1.8	53.5	54.2	37.8	38.2	14.0	12.4	
D2	purple	98.7	0.9	40.9	41.4	15.1	15.8	-13.1	-13.3	
E2	yellow green	95.4	3.3	71.8	73.2	-16.8	-16.5	50.6	47.7	
F2	orange yellow	95.5	3.3	71.5	72.7	18.8	17.4	54.2	51.5	
A3	blue	96.0	2.1	40.3	41.0	6.4	5.0	-35.4	-34.1	
B3	green	92.6	3.3	59.0	59.9	-27.9	-27.5	23.8	20.6	
C3	red	97.6	1.5	44.6	44.6	39.4	39.8	17.4	16.0	
D3	yellow	96.7	3.0	79.0	79.9	6.5	5.1	73.2	70.6	
E3	magenta	96.0	2.5	56.4	57.7	39.9	39.5	-9.2	-7.1	
F3	cyan	98.4	1.4	57.2	58.2	-16.8	-17.4	-19.8	-19.1	
A4	white	97.7	0.7	92.4	92.5	0.4	0.2	3.2	3.9	
B4	neutral 8	98.6	1.1	80.3	81.2	-0.6	-0.6	2.3	3.0	
C4	neutral 6.5	98.2	1.3	68.3	69.4	-0.3	-0.5	1.8	2.4	
D4	neutral 5	100.0	1.3	55.7	56.9	0.5	0.6	2.2	2.1	
E4	neutral 3.5	92.2	1.4	47.5	48.2	0.9	1.0	1.5	0.3	
F4	black	87.2	1.7	37.2	37.4	-0.1	0.4	1.9	0.3	
A5	paper white	93.3	1.2	94.8	94.5	0.4	0.2	1.6	2.7	
B5	Skin highlight L*=88	89.9	2.3	85.7	86.3	10.9	9.9	12.8	10.9	
C5	Skin highlight L* =75	92.0	2.9	74.6	76.1	17.3	16.2	17.6	15.4	
D5	Skin shadow L*=28	97.9	0.9	37.7	37.9	10.1	10.7	12.3	11.8	
E5	Skin shadow L*=13	96.2	1.0	32.6	32.3	8.2	8.8	8.8	9.5	
F5	Maximum Black	100.0	1.3	26.4	25.1	1.3	1.1	2.3	2.6	
Summary Results		I* Color	I* tone	ΔE	90 Megalux hours					
Average Score for all patches		95.2	94.5	2.0						
Worst 10% (3 lowest scoring patches)		89.3	91.0	3.3						

Epson Stylus Pro 3880, Epson OEM UltraChrome K3™ with Vivid Magenta, Kernow Coatings Ltd – Tresco Design 160gsm 50/50 Polyester/Cotton, no additional coating



Patch #	Description	I* Color	ΔE	L*		a*		b*		
				Before	After	Before	After	Before	After	
A1	Dark Skin	88.9	2.3	46.2	47.3	9.0	9.7	10.2	8.3	
B1	Light Skin	93.9	2.3	66.6	68.0	15.2	15.0	15.6	13.8	
C1	Blue sky	95.9	1.8	55.5	56.8	-3.7	-4.1	-16.1	-15.0	
D1	Foliage	89.4	2.5	50.6	51.7	-8.1	-7.5	14.7	12.5	
E1	blue flower	91.0	2.9	59.3	61.1	7.1	6.8	-18.5	-16.2	
F1	bluish green	91.0	3.2	71.2	72.7	-25.9	-24.4	2.4	-0.1	
A1	orange	94.8	3.4	63.4	64.5	31.3	30.5	42.3	39.2	
B2	purplish blue	93.9	2.9	48.6	49.9	6.2	4.7	-33.9	-31.7	
C2	moderate red	96.5	2.1	53.5	54.4	37.8	38.3	14.0	12.2	
D2	purple	98.4	1.1	40.9	41.5	15.1	15.8	-13.1	-13.4	
E2	yellow green	94.5	3.8	71.8	73.4	-16.8	-16.4	50.6	47.2	
F2	orange yellow	95.1	3.6	71.5	72.9	18.8	17.4	54.2	51.2	
A3	blue	95.7	2.2	40.3	41.1	6.4	4.9	-35.4	-34.1	
B3	green	91.9	3.6	59.0	60.2	-27.9	-27.3	23.8	20.4	
C3	red	97.2	1.7	44.6	44.8	39.4	40.0	17.4	15.8	
D3	yellow	96.4	3.3	79.0	80.0	6.5	5.1	73.2	70.3	
E3	magenta	95.6	2.7	56.4	57.9	39.9	39.7	-9.2	-6.9	
F3	cyan	97.6	1.6	57.2	58.3	-16.8	-17.5	-19.8	-18.9	
A4	white	93.5	1.1	92.4	92.6	0.4	0.2	3.2	4.3	
B4	neutral 8	95.8	1.4	80.3	81.4	-0.6	-0.6	2.3	3.2	
C4	neutral 6.5	96.9	1.6	68.3	69.6	-0.3	-0.5	1.8	2.6	
D4	neutral 5	100.0	1.4	55.7	57.0	0.5	0.7	2.2	2.1	
E4	neutral 3.5	91.1	1.6	47.5	48.5	0.9	1.1	1.5	0.2	
F4	black	85.1	2.0	37.2	37.6	-0.1	0.6	1.9	0.2	
A5	paper white	91.1	1.3	94.8	94.8	0.4	0.2	1.6	2.9	
B5	Skin highlight L*=88	89.2	2.4	85.7	86.4	10.9	9.9	12.8	10.7	
C5	Skin highlight L* =75	91.8	3.0	74.6	76.2	17.3	16.3	17.6	15.3	
D5	Skin shadow L*=28	97.0	1.0	37.7	38.0	10.1	10.8	12.3	11.6	
E5	Skin shadow L*=13	95.7	1.1	32.6	32.2	8.2	8.9	8.8	9.6	
F5	Maximum Black	100.0	1.3	26.4	25.0	1.3	1.1	2.3	2.6	
Summary Results		I* Color	I* tone	ΔE	100 Megalux hours					
Average Score for all patches		94.2	94.5	2.2						
Worst 10% (3 lowest scoring patches)		87.7	91.5	3.7						

Epson Stylus Pro 3880, Epson OEM UltraChrome K3™ with Vivid Magenta, Kernow Coatings Ltd – Tresco Design 160gsm 50/50 Polyester/Cotton, no additional coating

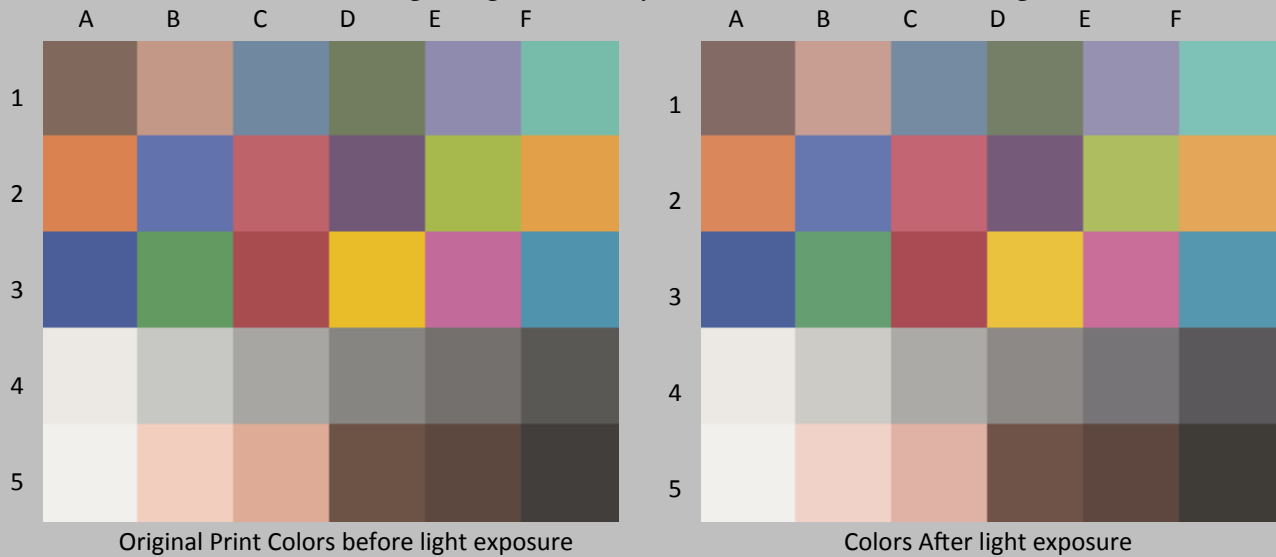


Original Print Colors before light exposure

Colors After light exposure

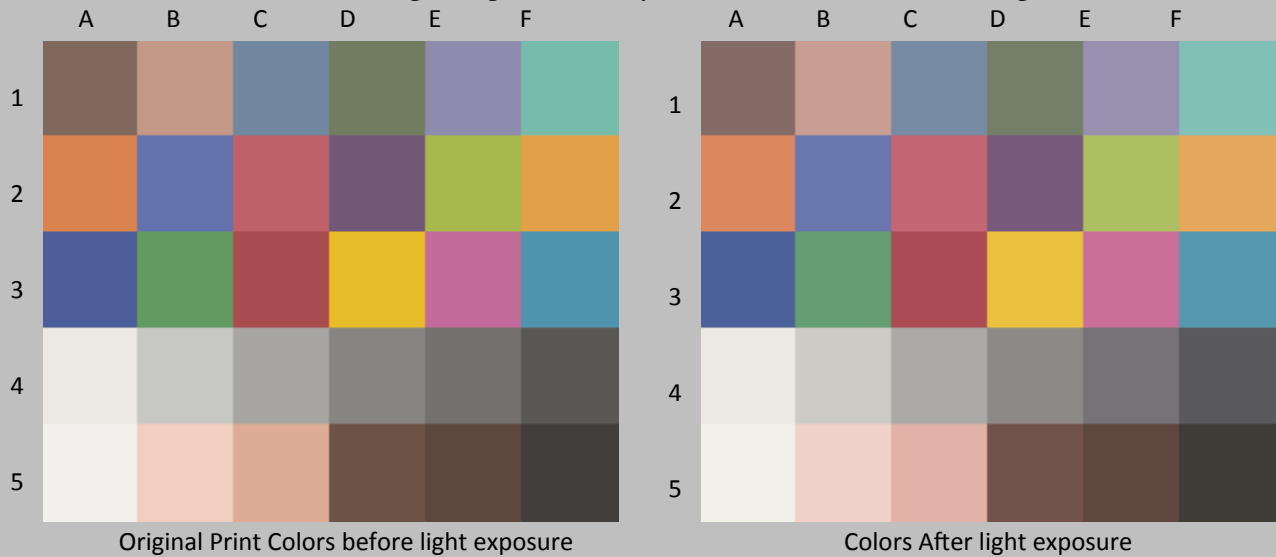
Patch #	Description	I* Color	ΔE	L*		a*		b*		
				Before	After	Before	After	Before	After	
A1	Dark Skin	83.8	2.9	46.2	47.4	9.0	10.1	10.2	7.7	
B1	Light Skin	92.3	2.9	66.6	68.5	15.2	15.0	15.6	13.5	
C1	Blue sky	91.6	2.3	55.5	56.8	-3.7	-4.2	-16.1	-14.3	
D1	Foliage	84.1	3.4	50.6	51.8	-8.1	-7.2	14.7	11.7	
E1	blue flower	85.0	3.9	59.3	61.1	7.1	6.8	-18.5	-15.0	
F1	bluish green	89.2	3.6	71.2	72.7	-25.9	-23.8	2.4	-0.2	
A1	orange	92.2	4.7	63.4	64.6	31.3	30.4	42.3	37.8	
B2	purplish blue	90.4	4.1	48.6	50.0	6.2	4.3	-33.9	-30.5	
C2	moderate red	95.7	2.4	53.5	54.3	37.8	38.7	14.0	12.0	
D2	purple	97.4	1.4	40.9	41.9	15.1	16.1	-13.1	-13.3	
E2	yellow green	91.4	5.3	71.8	73.5	-16.8	-15.9	50.6	45.6	
F2	orange yellow	92.4	5.1	71.5	73.0	18.8	17.3	54.2	49.6	
A3	blue	93.5	3.0	40.3	41.4	6.4	4.6	-35.4	-33.2	
B3	green	88.4	4.9	59.0	60.2	-27.9	-27.1	23.8	19.1	
C3	red	95.9	2.2	44.6	44.6	39.4	40.5	17.4	15.5	
D3	yellow	94.6	4.6	79.0	79.9	6.5	5.3	73.2	68.8	
E3	magenta	92.2	3.9	56.4	57.8	39.9	39.5	-9.2	-5.5	
F3	cyan	95.7	2.0	57.2	58.4	-16.8	-17.5	-19.8	-18.3	
A4	white	72.8	3.1	92.4	92.0	0.4	0.4	3.2	6.3	
B4	neutral 8	84.8	2.2	80.3	81.3	-0.6	-0.5	2.3	4.3	
C4	neutral 6.5	93.3	1.7	68.3	69.6	-0.3	-0.5	1.8	2.9	
D4	neutral 5	100.0	1.4	55.7	57.0	0.5	0.8	2.2	2.1	
E4	neutral 3.5	86.8	2.1	47.5	48.6	0.9	1.4	1.5	-0.2	
F4	black	77.0	2.7	37.2	37.7	-0.1	0.8	1.9	-0.6	
A5	paper white	75.4	2.9	94.8	94.4	0.4	0.1	1.6	4.4	
B5	Skin highlight L*=88	88.9	2.5	85.7	86.4	10.9	9.9	12.8	10.7	
C5	Skin highlight L* =75	89.2	3.6	74.6	76.3	17.3	16.2	17.6	14.6	
D5	Skin shadow L*=28	92.7	1.7	37.7	38.0	10.1	11.1	12.3	11.0	
E5	Skin shadow L*=13	95.4	1.2	32.6	32.1	8.2	9.0	8.8	9.4	
F5	Maximum Black	100.0	1.3	26.4	25.1	1.3	1.2	2.3	2.6	
Summary Results		I* Color	I* tone	ΔE	120 Megalux hours					
Average Score for all patches		90.1	93.7	3.0						
Worst 10% (3 lowest scoring patches)		75.1	89.2	5.1						

Epson Stylus Pro 3880, Epson OEM UltraChrome K3™ with Vivid Magenta, Kernow Coatings Ltd – Tresco Design 160gsm 50/50 Polyester/Cotton, no additional coating



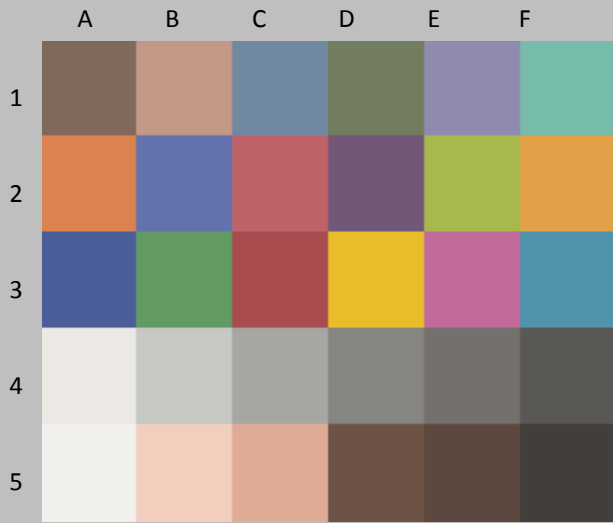
Patch #	Description	I* Color	ΔE	L*		a*		b*		
				Before	After	Before	After	Before	After	
A1	Dark Skin	79.6	3.5	46.2	47.5	9.0	10.3	10.2	7.2	
B1	Light Skin	87.6	3.8	66.6	68.7	15.2	15.1	15.6	12.4	
C1	Blue sky	95.1	2.0	55.5	57.0	-3.7	-4.0	-16.1	-14.8	
D1	Foliage	81.4	3.8	50.6	51.8	-8.1	-7.2	14.7	11.2	
E1	blue flower	89.9	3.3	59.3	61.5	7.1	7.3	-18.5	-16.0	
F1	bluish green	84.1	5.0	71.2	73.2	-25.9	-23.6	2.4	-1.7	
A1	orange	90.7	5.6	63.4	64.8	31.3	30.4	42.3	37.0	
B2	purplish blue	94.0	3.1	48.6	50.3	6.2	4.8	-33.9	-31.7	
C2	moderate red	93.5	3.3	53.5	54.7	37.8	38.7	14.0	11.0	
D2	purple	94.7	1.8	40.9	41.8	15.1	16.3	-13.1	-13.9	
E2	yellow green	90.7	5.8	71.8	73.8	-16.8	-16.3	50.6	45.2	
F2	orange yellow	91.3	5.8	71.5	73.3	18.8	17.2	54.2	49.0	
A3	blue	95.7	2.3	40.3	41.3	6.4	4.9	-35.4	-34.0	
B3	green	86.6	5.6	59.0	60.4	-27.9	-27.1	23.8	18.4	
C3	red	94.7	2.8	44.6	44.7	39.4	40.5	17.4	14.9	
D3	yellow	93.9	5.2	79.0	80.3	6.5	4.8	73.2	68.4	
E3	magenta	95.3	2.9	56.4	58.1	39.9	40.1	-9.2	-6.8	
F3	cyan	98.5	1.7	57.2	58.6	-16.8	-17.3	-19.8	-19.1	
A4	white	100.0	0.4	92.4	92.7	0.4	0.4	3.2	3.4	
B4	neutral 8	99.0	1.5	80.3	81.7	-0.6	-0.4	2.3	2.9	
C4	neutral 6.5	98.4	1.7	68.3	69.8	-0.3	-0.4	1.8	2.4	
D4	neutral 5	98.8	1.7	55.7	57.2	0.5	0.9	2.2	1.7	
E4	neutral 3.5	81.0	2.7	47.5	48.8	0.9	1.5	1.5	-0.7	
F4	black	71.4	3.2	37.2	37.5	-0.1	1.0	1.9	-1.1	
A5	paper white	99.9	0.5	94.8	94.9	0.4	0.2	1.6	2.1	
B5	Skin highlight L*=88	77.0	4.5	85.7	86.8	10.9	9.9	12.8	8.6	
C5	Skin highlight L* =75	83.6	5.0	74.6	76.6	17.3	16.3	17.6	13.2	
D5	Skin shadow L*=28	89.7	2.1	37.7	37.9	10.1	11.4	12.3	10.6	
E5	Skin shadow L*=13	94.1	1.2	32.6	32.6	8.2	9.2	8.8	9.4	
F5	Maximum Black	100.0	1.4	26.4	25.0	1.3	1.2	2.3	2.6	
Summary Results		I* Color	I* tone	ΔE	140 Megalux hours					
Average Score for all patches		91.0	93.7	3.1						
Worst 10% (3 lowest scoring patches)		76.0	89.0	5.7						

Epson Stylus Pro 3880, Epson OEM UltraChrome K3™ with Vivid Magenta, Kernow Coatings Ltd – Tresco Design 160gsm 50/50 Polyester/Cotton, no additional coating



Patch #	Description	I* Color	ΔE	L*		a*		b*	
				Before	After	Before	After	Before	After
A1	Dark Skin	75.7	4.1	46.2	47.8	9.0	10.4	10.2	6.7
B1	Light Skin	85.7	4.3	66.6	68.8	15.2	15.2	15.6	12.0
C1	Blue sky	92.5	2.5	55.5	57.3	-3.7	-4.0	-16.1	-14.4
D1	Foliage	78.6	4.3	50.6	51.8	-8.1	-7.1	14.7	10.8
E1	blue flower	87.0	3.8	59.3	61.6	7.1	7.3	-18.5	-15.4
F1	bluish green	82.3	5.6	71.2	73.4	-25.9	-23.2	2.4	-2.0
A1	orange	88.8	6.6	63.4	65.0	31.3	30.4	42.3	36.0
B2	purplish blue	92.1	3.8	48.6	50.6	6.2	4.6	-33.9	-31.0
C2	moderate red	92.5	3.7	53.5	54.7	37.8	39.0	14.0	10.7
D2	purple	93.9	2.0	40.9	41.9	15.1	16.5	-13.1	-14.0
E2	yellow green	88.6	6.9	71.8	74.0	-16.8	-16.0	50.6	44.1
F2	orange yellow	89.4	6.9	71.5	73.4	18.8	17.1	54.2	47.9
A3	blue	95.0	2.5	40.3	41.3	6.4	4.8	-35.4	-33.8
B3	green	83.7	6.7	59.0	60.5	-27.9	-26.7	23.8	17.4
C3	red	93.4	3.4	44.6	45.0	39.4	40.5	17.4	14.3
D3	yellow	92.4	6.2	79.0	80.4	6.5	4.7	73.2	67.3
E3	magenta	94.0	3.5	56.4	58.3	39.9	39.8	-9.2	-6.2
F3	cyan	97.7	1.9	57.2	58.7	-16.8	-17.2	-19.8	-18.8
A4	white	98.9	0.6	92.4	92.5	0.4	0.4	3.2	3.8
B4	neutral 8	97.3	1.6	80.3	81.7	-0.6	-0.4	2.3	3.1
C4	neutral 6.5	98.0	1.7	68.3	69.8	-0.3	-0.4	1.8	2.5
D4	neutral 5	97.6	1.7	55.7	57.2	0.5	0.9	2.2	1.6
E4	neutral 3.5	77.7	2.9	47.5	48.8	0.9	1.5	1.5	-1.0
F4	black	65.2	3.8	37.2	37.6	-0.1	1.2	1.9	-1.6
A5	paper white	95.5	0.9	94.8	94.8	0.4	0.2	1.6	2.5
B5	Skin highlight L*=88	74.4	4.9	85.7	86.8	10.9	10.0	12.8	8.1
C5	Skin highlight L* =75	81.1	5.6	74.6	76.8	17.3	16.4	17.6	12.5
D5	Skin shadow L*=28	87.1	2.6	37.7	38.0	10.1	11.5	12.3	10.2
E5	Skin shadow L*=13	94.3	1.2	32.6	32.5	8.2	9.3	8.8	9.2
F5	Maximum Black	100.0	1.3	26.4	25.1	1.3	1.2	2.3	2.5
Summary Results		I* Color	I* tone	ΔE		160 Megalux hours			
Average Score for all patches		89.0	93.2	3.6					
Worst 10% (3 lowest scoring patches)		71.8	88.4	6.8					

The 180 Megalux hour Update will be posted on approximately OCT 05, 2014.



Original Print Colors before light exposure



Colors After light exposure

Patch #	Description	I* Color	ΔE	L*		a*		b*	
				Before	After	Before	After	Before	After
A1	Dark Skin			46.2		9.0		10.2	
B1	Light Skin			66.6		15.2		15.6	
C1	Blue sky			55.5		-3.7		-16.1	
D1	Foliage			50.6		-8.1		14.7	
E1	blue flower			59.3		7.1		-18.5	
F1	bluish green			71.2		-25.9		2.4	
A1	orange			63.4		31.3		42.3	
B2	purplish blue			48.6		6.2		-33.9	
C2	moderate red			53.5		37.8		14.0	
D2	purple			40.9		15.1		-13.1	
E2	yellow green			71.8		-16.8		50.6	
F2	orange yellow			71.5		18.8		54.2	
A3	blue			40.3		6.4		-35.4	
B3	green			59.0		-27.9		23.8	
C3	red			44.6		39.4		17.4	
D3	yellow			79.0		6.5		73.2	
E3	magenta			56.4		39.9		-9.2	
F3	cyan			57.2		-16.8		-19.8	
A4	white			92.4		0.4		3.2	
B4	neutral 8			80.3		-0.6		2.3	
C4	neutral 6.5			68.3		-0.3		1.8	
D4	neutral 5			55.7		0.5		2.2	
E4	neutral 3.5			47.5		0.9		1.5	
F4	black			37.2		-0.1		1.9	
A5	paper white			94.8		0.4		1.6	
B5	Skin highlight L*=88			85.7		10.9		12.8	
C5	Skin highlight L* =75			74.6		17.3		17.6	
D5	Skin shadow L*=28			37.7		10.1		12.3	
E5	Skin shadow L*=13			32.6		8.2		8.8	
F5	Maximum Black			26.4		1.3		2.3	
Summary Results		I* Color	I* tone	ΔE	180 Megalux hours				
Average Score for all patches									
Worst 10% (3 lowest scoring patches)									